

## Annual NAACP Jubilee Day

In a release from the NAACP: The Anson County NAACP Jubilee Day held each year on the first day of the year to celebrate the Emancipation Proclamation. It was held this year at Mt. Pleasant Baptist Church on January 1, 2013 at noon. Rev. Nathaniel Floyd was the speaker of the hour. Along with members of Mt. Pleasant Baptist Church and visitors, the Anson County Executive Board members attend.



Picture back row: Jarvis Woodburn Member at Large, Shirley Allen Member at Large, Donnie K. Lewis Member at Large, Joann Bennett 3rd Vice President. Front row Margret Meachem Asst. Secretary, Emma Williams Treasurer, Ross Streater Asst. Treasurer, Vancine Sturdivant 2nd Vice President, Leon Gatewood 1st Vice President, Kishia Dunlap Secretary and Fredrick Colson Member at Large.



### AES Spelling Bee Winner

Ansonville Elementary recently held their school-wide Spelling Bee. Students who won their classroom spelling bees advanced on to the Anson County Schools' Bee. AES would like to congratulate Mrs. McRae's sixth grade student, Jessica Hall, for winning the school-wide Bee by spelling the word "reign" correctly. AES would also like to congratulate Mrs. Conklin's 5th grade student, Jake Thomas, who won runner-up in the Spelling Bee.

Jessica resides in Ansonville and is the daughter of Gregory and Cassandra Hall. Some of her hobbies include dancing and singing. She will compete in the county-wide Spelling Bee that will be held at Wadesboro Primary School on January 16 after school. In the event that Jessica is not able to represent AES, Jake Thomas will compete in her place.

Congratulations to both winners! Every student and staff member at Ansonville Elementary is school is pulling for you! Go Jessica!

### WPS Students Show Care for Fellow Student

Wadesboro Primary School second graders invited parents to bring coin donations to the recent PTA meeting as a love offering for Christian Ratliff, a student who received a liver transplant. Christian had been at Levine Children's Hospital in Charlotte.

Second graders have already sent get well cards. Coins for Christian is another way to let him know that we are thinking of him. There couldn't be a better way to stress the character trait of caring than to show concern and empathy for one of our WPS families.

### Make 2013 a Healthier Year with New Program

Did you make a New Year's resolution to eat healthier, exercise more, lose some weight, or a combination of these? If so, Cooperative Extension may have just the program for you! Eat Smart, Move More, Weigh Less, a weight management program developed by the NC Cooperative Extension and the NC Division of Public Health, will be offered starting in January. Classes will meet at the Cooperative Extension Center during the lunch hour. Janine Rywak, County Extension Director, will instruct the class. Cost for the 15-week program is \$30.

Eat Smart Move More Weigh Less explores behaviors and strategies to help you achieve and maintain a healthy weight. Each session will include an educational component, stretch time, personal weigh-in, and a weekly challenge. The program uses strategies proven to work and stresses personal dedication to become healthier. Participants will meet in a friendly, supportive environment and receive resource materials to help in their individual goals.

Each lesson informs, empowers and motivates participants to live mindfully as they make choices about eating and physical activity. The program provides opportunities for participants to track their progress and keep a journal of healthy eating and physical activity behaviors.

A free orientation about the program will be offered on Thursday, January 24 at 12 noon at the Cooperative Extension Center at 501 McLaurin Street in Wadesboro. Class details and guidelines will be shared at that time, as well as proposed meeting schedules.

To sign up for orientation or register for the 15-week program contact the Cooperative Extension Center at 704-694-2915. Eat Smart, Move More, Weigh Less is part of the Eat Smart, Move More...NC movement to increase opportunities for healthy eating and physical activity wherever North Carolinians live, learn, earn, play and pray. Find out more at [www.EatSmartMoveMoreNC.com](http://www.EatSmartMoveMoreNC.com).

### Low Income Energy Assistance Program

Applications for the Low Income Energy Assistance Program (LIEAP) will begin December 3rd and run through January 31. This program targets households who have a member 60 years of age or older or a member who is receiving services through the Division of Aging and Adult Services(DAAS). If there are any funds remaining after January 31st all other households may be eligible.

Households meet income eligibility if the total household members' countable income for is equal to or less than 130% of the current poverty level. Household members meet the resource requirement if the total household members' countable resources are \$2,200 or less.

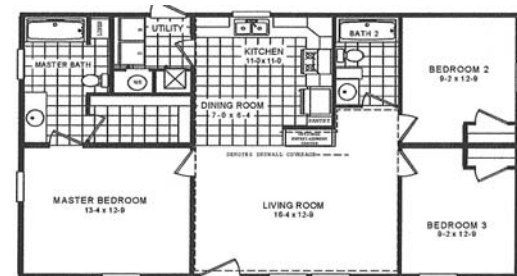
Applications will be taken Monday through Friday, from 8:30 a.m. to 4 p.m. at the Department of Social Services. The program will end on February 28, 2012. For more information please call 704-694-9351.

### Bowling for the Arts

The weather is cold, but the chili and cornbread will be warm. Join the fun on Wednesday, January 30th, when Anson County Arts Council patrons gather at the First Presbyterian Church Fellowship Hall between the hours of 11:30 a.m. and 1:30 p.m. First you will select a beautiful hand-thrown bowl to add to your pottery collection, and then you will enjoy a delicious meal of homemade chili, cornbread, slaw, tea, and dessert for \$25.

Tickets are available at the Chamber of Commerce, Lacy's, and the Anson County Arts Council. Please call 704-694-4950 for more information.

### Off Frame Modular



**\$77,000 TURN KEY JOB** 3 Bedroom 2 Bath

**1st CHOICE HOME CENTERS** 1ST CHOICE HOUSING IN MONROE  
2008 East Roosevelt Street  
Monroe • 704-225-8850  
[www.1stchoicemonroe.com](http://www.1stchoicemonroe.com)



• Modular Homes  
• New Construction  
• Remodeling  
• Room Additions  
• Metal Buildings

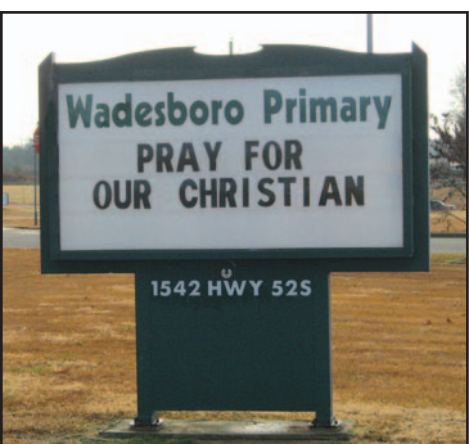
**Residential & Commercial**

**MORE THAN A CONTRACTOR WE'RE YOUR NEIGHBOR.**  
We've built our reputation on more than just quality construction. The great relationships we've built with our customers are the true foundation of our continued success.

The Place to CALL for all your BUILDING NEEDS

**21st Century Housing** Custom Modular Homes  
**Terry L. Smith Construction**

Two Locations To Serve You: 3900 Hwy. 24/27 Midland 704-888-8801 | 1443 Hwy. 52 N. Albemarle 704-982-6208



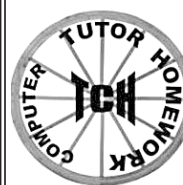
### TUTORING

Math • English • Writing  
Reading • Science  
History • Research

**COMPUTERS**  
Adult and Children  
who want improved  
computer skills

**HOMEWORK**  
Children who  
need a little  
extra help

We are Local, We are Affordable,  
and We want to help.



**TCH** 100 Covington Street • Wadesboro  
910-691-8008 • [mareleigh@yahoo.com](mailto:mareleigh@yahoo.com)

## The Anson High School Majorettes are hosting...



**THIS THURSDAY, JANUARY 17 AT 6:30PM**  
**Wadesboro Primary School Gym • Highway 52 South**  
**Admission \$5**

All proceeds will go towards the majorettes' upcoming performance at Walt Disney World in Florida

Performers Include  
• Various Talents from Anson County  
• Majorettes  
• Singers  
• Dancers  
• Brenda "BJ" Pratt  
• AHS Cheerleaders  
• AMS Cheerleaders  
• Gymnasts  
• Comedy  
• Much More!!!

Come out and enjoy a fun, family evening while supporting some of Anson County's youth.

**NC Inspection**  
**Oil Change**  
**Tire Repair**  
**Drinks**  
**Snacks**  
**EAST WADE**  
**GULF**  
Across from Police Station on Washington Street in Wadesboro  
**704-694-2787**  
**Alan Jackson**