

In many areas, winter is a season of bitter cold and numbing wetness. Help your pets remain happy and healthy during the colder months by following these simple guidelines.

- Don't leave pets outdoors when the temperature drops. Most dogs, and all cats, are safer indoors, except when taken out for exercise. Regardless of the season, shorthaired, very young, or old dogs and all cats should never be left outside without supervision. Short-coated dogs may feel more comfortable wearing a sweater during walks.
- No matter what the temperature, windchill can threaten a pet's life. A dog or cat is happiest and healthiest when kept indoors. If your dog is an outdoor dog, however, he/she must be protected by a dry, draft-free doghouse that is large enough to allow the dog to sit and lie down comfortably, but small enough to hold in his/her body heat. The floor should be raised a few inches off the ground and covered with cedar shavings or straw. The house should be turned to face away from the wind, and the doorway should be covered with waterproof burlap or heavy plastic.
- Pets who spend a lot of time outdoors need more food in the winter because keeping warm depletes energy. Routinely check your pet's water dish to make certain the water is fresh and unfrozen. Use plastic food and water bowls rather than metal; when the temperature is low, your pet's tongue can stick and freeze to metal.
- Warm engines in parked cars attract cats and small wildlife, who may crawl up under the hood. To avoid injuring any hidden animals, bang on your car's hood to scare them away before starting your engine.
- The salt and other chemicals used to melt snow and ice can irritate the pads of your pet's feet. Wipe the feet with a damp towel before your pet licks them and irritates his/her mouth.
- Antifreeze is a deadly poison, but it has a sweet taste that may attract animals and children. Wipe up spills and store antifreeze (and all household chemicals) out of reach. Better yet, use antifreeze-coolant made with propylene glycol; if swallowed in small amounts, it will not hurt pets, wildlife, or your family.
- **Probably the best prescription for winter's woes is to keep your dog or cat inside with you and your family.** The happiest dogs are those who are taken out frequently for walks and exercise but kept inside the rest of the time. Dogs and cats are social animals who crave human companionship. Your animal companions deserve to live indoors with you and your family.

## Black Gold, Slavery and Reed Gold Mine

### Black History Month tours offered

The origins and impact of slavery in North Carolina, Cabarrus County and the benefits of slave labor to Reed Gold Mine will be examined during Black History Month. Reed Gold Mine State Historic Site will offer "Black Gold: North Carolina Slavery and Reed Gold Mine" tours Saturday, Feb. 6, 13, 20 and 27 at 1 p.m. and examine the area's social and economic environment during John Reed's lifetime.

When John Reed arrived in Cabarrus County in 1782 as a Hessian army deserter, he found himself at home in a community with a familiar language and culture. Owning slaves in colonial and antebellum North Carolina was a societal norm, and through their labor economic ventures like farming and gold mining boomed.

The "Black Gold" tour allows Reed Gold Mine to share a forgotten part of North Carolina history, connect with the origins of Reed Gold Mine and discover how piedmont North Carolina was transformed through the years of back-breaking labor of enslaved men, women and children.

In telling the slavery story of eastern Cabarrus County through the 19th century, Reed Gold Mine will share its importance in the greater North Carolina narrative. "Black Gold" provides the opportunity to connect with people and fill an educational need extending beyond one month on the calendar. The story of the discovery of gold is important at Reed Gold Mine, but it is not the only story to be told. "Black Gold: North Carolina Slavery and Reed Gold Mine" is a \$2 tour; children under age seven are free.

For additional information, please call (704) 721-4653 or email [reed@ncdcr.gov](mailto:reed@ncdcr.gov). Reed Gold Mine is located in south-eastern Cabarrus County, 12 miles southeast of Concord, 25 miles east of Charlotte, and 18 miles west of Albemarle.

Hours are Tuesday through Saturday, 9 a.m. to 5 p.m. The site is closed on Sunday, Monday and on major holidays. Admission is free. Reed Gold Mine is part of the Division of State Historic Sites, Office of Archives and History, an agency of the N.C. Department of Natural and Cultural Resources.

## Burr Gallery in Cheraw Features Exhibit of Fine Crafts



In celebration of National Hobby month, the Cheraw Arts Commission will feature an exhibit of fine crafts at the Burr Gallery during January. Included in the exhibit will be pottery, hand woven baskets and furniture.

- Displayed in the gallery will be ceramic pieces by Eddie Dial of Blenheim, SC. Also included in his creations are numerous face jugs with their characteristic oversized teeth and wide eyes. The history of face jugs dates back to the 1800's when created by African-Americans in the Carolinas and Georgia.

- A collection of rattan reed baskets by Ramona Boykin will be exhibited. She is the owner of August Moon Basketry and has been providing basket weaving supplies for over 30 years.
- Furniture by Brad Allen of Chesterfield will also be featured during the month. A handcrafted table and bench will be on display.

The public is invited to a gallery opening on Tuesday, January 12 from 5:00-7:00pm. The Burr Gallery is located at the Cheraw Community Center - 200 Powe Street. Hours are Monday-Friday from 8:30am-5:00pm.

Contact the Cheraw Arts Commission for additional information - 843.537.8420 x 12.

## Important Board of Election Dates

- **Monday, January 25** Absentee by mail ballots available for March 15 Election
- **Saturday, January 30** Begin publishing require election notices
- **Sunday, January 31** to Tuesday, February 2 Elections training in Durham
- **Tuesday, February 9** Regular monthly board meeting 5 p.m.
- **Thursday, February 11** L&A equipment testing at BOE office 9 a.m.
- **Thursday, February 18** Mock election
- **Friday, February 19** Voter registration & party changes deadline
- **Tuesday, February 23** Absentee meeting 5 p.m.
- **Saturday, February 27** Early Voting observer list due from political parties by 10 a.m.
- **Tuesday, March 1** Absentee meeting 5 p.m.
- **Thursday, March 3** Early Voting begins
- **Tuesday, March 8** Absentee meeting 5 p.m.
- **Tuesday, March 8** Last day to request absentee by mail 5 p.m.
- **Thursday, March 10** Election day observer list due by 10 a.m.
- **Saturday, March 12** Early Voting ends 1 p.m.
- **Monday, March 14** Absentee meeting (pre-election day) 5 p.m.
- **Tuesday, March 15** Primary Election day. Polls open 6:30 a.m. & close 7:30 p.m.
- **Tuesday, March 15** Deadline for civilian absentee ballot return 5 p.m.
- **Friday, March 18** Sample hand to eye / provisional county 12 p.m.
- **Tuesday, March 22** County canvass of Primary Election 11 a.m.
- **Thursday, March 24** Deadline to request 2nd Primary by 12 p.m.
- **Thursday, March 24** Deadline to file election protest by 5 p.m.
- **Friday, March 25** Good Friday, county offices closed

## Carolinas HealthCare System Mobile Medical Unit Schedule

The Carolinas HealthCare System Mobile Medical Unit will visit the locations below during January:

- Friday, January 22 - Grace Senior Center 9am-1pm
- Monday, January 25 - Burnsville Fire Department 9am-12 noon
- Friday, January 29 - Glennie Bennett Community Center in Morven 9am-1pm

## Storytime Every Wednesday at Partnership for Children

The Anson County Partnership for Children offers Storytime in the Early Childhood Resource Center each Wednesday, from 10 to 10:30 a.m. for children ages 3 to 8. For more information call 704-694-4036.



Accepting New Patients  
We Accept Most Insurances



Call for an appointment today



Holly Allison Kiker, OD

**ANSON FAMILY OPTOMETRIC, PLLC.**

1134 Holly Street in Wadesboro (On Hwy 74 across from Forbes Jewelers)  
Mon-Thurs 8:30-5 & Friday 8:30-12:30 704-694-3618



## DID CHRISTMAS LEAVE YOU BROKE?



- ✓ Taxes Due
- ✓ Insurance
- ✓ Household Expenses
- ✓ Car Repairs
- ✓ Vehicle Purchase
- ✓ You Name It!

Loans from \$500 to \$7,500 JUST ASK!

## BASIC FINANCE, Inc

913 East Caswell Street • Wadesboro  
704-694-3619

Introducing

## The HOPE Chest

A new clothing ministry for women with young children offering free clothes sizes up to 4T. By appointment only.

**Where:** 19 S. Williams St, Polkton, NC 28135

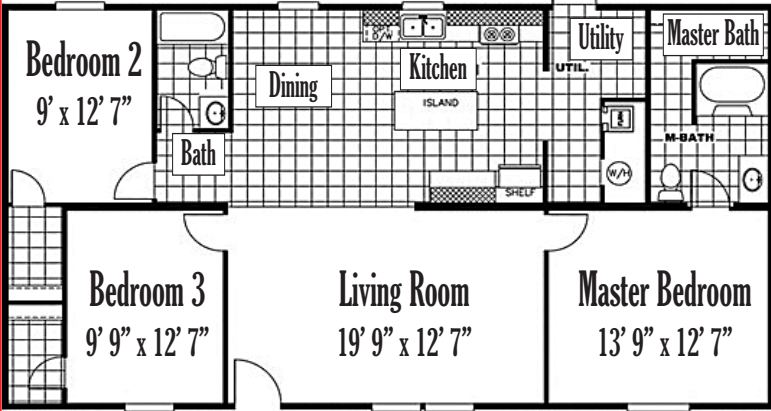
**To Sign Up:** Call 704-690-6689



704.690.6689  
[www.hprc-anson.org](http://www.hprc-anson.org)  
[hope.prc.anson@gmail.com](mailto:hope.prc.anson@gmail.com)

## THE MONEY HOME Delivered to Site & Set Up

**28x48 3 BEDROOM 2 BATH Thermopane Windows, Refrigerator, Range, Dishwasher, Heat Pump, Footings & Brick Skirting, Steps, 200 Amp Electrical Service, Plumbing, Permits \$59,995** Plus Tax & Title



No land improvements included, but can be added.



2008 E Roosevelt Street (Hwy 74)

Monroe • 704-225-8850

[www.1stchoicemonroe.com](http://www.1stchoicemonroe.com)

## JBW

J.B. Watson & Co., PLLC

Certified Public Accountants

*While you take care of business, let us take care of all your accounting needs.*

- + CORPORATE, PARTNERSHIP & INDIVIDUAL TAX PREPARATION
- + INCOME TAX PLANNING
- + BUSINESS CONSULTING
- + BOOKKEEPING & PAYROLL SERVICES
- + COMPILATION, REVIEW & AUDIT SERVICES

120 South Rutherford Street  
PO Box 341  
Wadesboro, NC 28170

Phone: 704-694-5174  
Fax: 704-694-6970  
Email: [jhanna@jbwandco.com](mailto:jhanna@jbwandco.com)