

# Judy's Tax Service

For Hometown Service  
And More...  
See Us In 2018!



- ELECTRONIC FILING
- DIRECT DEPOSIT (Federal & NC State)

Hours: Monday - Friday 9 am - 6 pm  
Saturday 9 am - 12 pm

102 South Rutherford Street • Wadesboro, NC

**704-694-6342**

## POLKTON FIRE DEPARTMENT'S

### BARBECUE

Saturday • Feb 3



10am  
Until

Dine-In or Drive-Thru Carry-Outs Too!

#### SALT & PEPPER CHICKEN!

### BBQ Pork and Chicken Plates

Served with Beans,  
Cole Slaw, Bread & Dessert!

**Plates Only \$9**

Citizens' Donations of Baked Goods for Dessert  
or Monetary Donations Will Be Gratefully Appreciated.

Call 704-272-7933 to place large orders

## Ark Encounter Tour Offered by Grace Senior Center

Grace Senior Center will sponsor a tour to the "Ark Encounter" in Williamston Kentucky, June 4-6. The Ark Encounter features a full-size Noah's Ark, built according to the dimensions given in the bible.

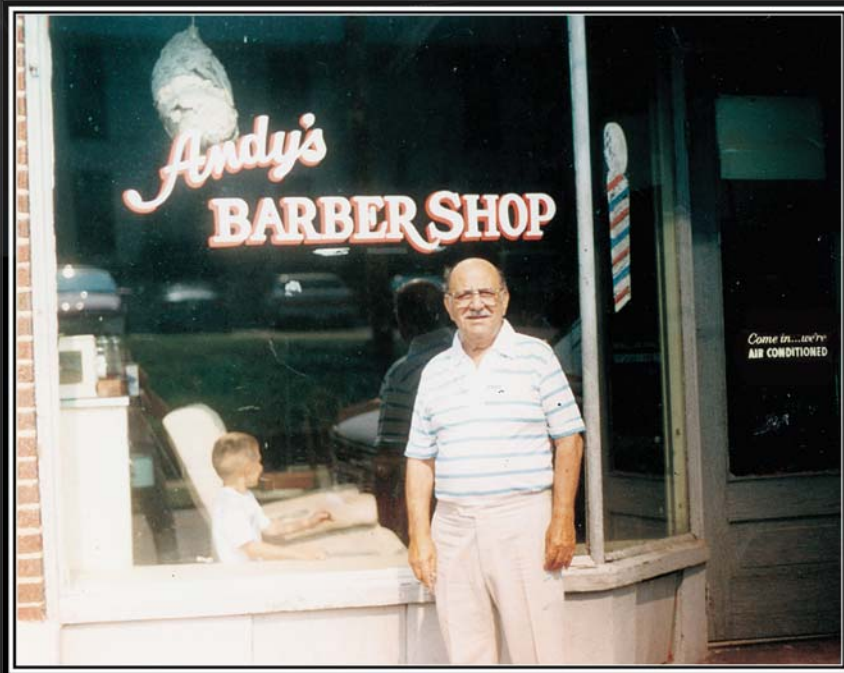
Spanning 510 feet long, 85 feet wide and 51 feet high, it features three decks filled with scores of world-class exhibit bays that allow you to experience what life on the ark may have been like. See how this amazing structure was built. Learn how Noah could have cared for all the animals and how the ark was big enough to fit them all on board. Visit the state of the art 75,000 square foot Creation Museum and the original KFC Harland Sanders Café and Museum.

The price per person for this tour is \$359 for double occupancy. It includes two night hotel accommodations, two breakfasts, two dinners, the Ark Encounter, Creation Museum and the Original KFC Café and Museum. A \$50 deposit is required at registration and the balance is due by April 20.

Persons interested should call Mary Jones, Activity Director at Grace Senior Center, to register or for additional information at 704-694-6616.

**SELL IT! RENT IT! HIRING!  
ADVERTISE YOUR SERVICE!  
USE THE EXPRESS CLASSIFIEDS  
AND REACH EVERY  
HOUSEHOLD IN ANSON COUNTY!  
704-694-2480 OR  
TheExpressNews@gmail.com**

## Remembering..... By Ed McBride



### Andy's Barber Shop

Around the beginning of World War II many US troops were trained not only right here in Anson County, but in many areas over the country. Some of the trainees were from other parts of the United States and had never been "south" before. I was reminded of this while reminiscing with Andy and Eleanor Pesce.

Andy and Eleanor met at an American Legion dance at Shelby, NC - I think about 1942 - while Eleanor was working in Charlotte and Andy was a medic in the military. Later, in 1944, they married and moved to Wadesboro, while Rev. Ken Goodson was minister, and Andy started his career of barbering in the Watson Barber Shop,

later at Shine James' Shop, later still at Doss Heavener's Barber Shop. You see, there were many barber shops at that time in the "four square block" of downtown Wadesboro - none of which exist today - Graves, Watsons, Stogners, Heaveners, James - and several more.

Andy opened his shop in 1946 and stayed "with it" until retiring in 1994. I did the above sign again, not long before he retired. (He "wore out" several during his barbering days.)

Andy did many "children's haircuts," some of whom today are parents and grandparents!!

- Oh yes, Andy, I didn't tell about your first Sunday in the "Wesley Bible Class," did I??

### Parks and Recreation Spring Sports Registration

Anson County Parks and Recreation is holding registration for their spring sports programs, from February 1 to March 2. The sports are:

- Tee Ball - ages 4 to 6
- Coach Pitch - ages 7 & 8
- Minor Baseball - ages 9 & 10
- Major Baseball - ages 11 & 12
- Girls Softball - ages 4-6; 7 & 8; 9 & 10; 11 & 12; and 13-15
- Micro Soccer - ages 3 & 4
- Youth Soccer - grades K-2; 3 & 4; 5 & 6; 7-9; and 10-12

The cost for each of the programs is \$25.

You can register at the Little Park office, Monday to Friday, from 8:30 a.m. to 5 p.m. The address is 845 Airport Road in Wadesboro.

Registration will also take place from 2 to 3:30 p.m. at these locations:

- Monday, February 5 - Wadesboro Elementary School
- Tuesday, February 6 - Wadesboro Primary School
- Wednesday, February 7 - Lilesville Elementary School
- Thursday, February 8 - Morven Elementary School
- Monday, February 12 - Peachland-Polkton Elementary School
- Tuesday, February 13 - Walmart in Wadesboro
- Wednesday, February 14 - Ansonville Elementary School
- Tuesday, February 20 - Walmart in Wadesboro

You can visit [www.co.anson.nc.us](http://www.co.anson.nc.us) and fill out a registration form. Or contact Jeff Waisner at 704-695-2550 ([waisner@co.anson.nc.us](mailto:waisner@co.anson.nc.us)); Wendell Small at 704-695-2782 ([wsmall@co.anson.nc.us](mailto:wsmall@co.anson.nc.us)); or Morris Gatewood at 704-694-5751 ([mgatewood@co.anson.nc.us](mailto:mgatewood@co.anson.nc.us)).

### Senior Health Insurance Information Program Seeks Volunteers

North Carolina Seniors' Health Insurance Information Program, or SHIIP, is a flagship program for the Department of Insurance. Recognized as a national model for seniors' information program and known to citizens across the state as a reliable resource for clear and unbiased information about Medicare and other issues, SHIIP has grown to serve all 100 counties with hundreds of volunteers since it began in 1986.

In order to continue to offer this excellent service to seniors in Anson County, they need more dedicated and caring volunteers. If you are interested in becoming a trained SHIIP Volunteer please call Bernice Bennett at 704-694-6616 for additional information.

## BETHANY WOODS Nursing & Rehabilitation Center

### EMPLOYMENT OPPORTUNITY

#### RN / LPN Position Available

No Experience Required - New Graduates Welcome  
Special Rates for Weekend Position

**Sign On Bonus for \$1,500**

Apply in person 33426 Old Salisbury Road in Albemarle  
For Questions Call Jana Teal, RN Staff Facilitator  
704-983-1195

#### Mrs. Nancy Howell Funderburk

Mrs. Nancy Howell Funderburk, 80, of Ansonville, passed away on Monday January 29, 2018, at Woodhaven Court.

Funeral services will be held on Friday, February 2, 2018, at 2 p.m. at Concord United Methodist Church with Rev. Robert Burr officiating. Interment will follow in the church cemetery. The family will receive friends one hour prior to the service.



Mrs. Funderburk was born on December 7, 1937, in Anson County to the late Millard Cleveland and Maebelle Smith Howell. She was a 1955 graduate of Anson High School, and a member at Concord United Methodist Church.

Nancy was truly a loving soul, and she will be greatly missed by all her family and friends.

In addition to her parents she was preceded in death by her sister Anna Howell Woodall.

Mrs. Funderburk is survived by her husband Edward Marvin Funderburk of the home; three brothers, M.C. Howell (Linda) of Monroe, Bobby Howell (Diane) of Greenville, NC, and Gary Howell (Cyndy) of Cary; her sister Debbie Allen (Lannie) of Ansonville; her brother-in-law Donald Woodall; and numerous nieces and nephews.

The family would like to extend a special thank you to the wonderful staff of Woodhaven Court and Community Hospice for their loving care.

Memorials may be made to Concord United Methodist Church c/o Carla Shankle, 3655 Randall Road, Polkton NC 28135.

Online condolences may be made at [edwardsfunerhomes.com](http://edwardsfunerhomes.com).

## BETHANY WOODS Nursing & Rehabilitation Center

### EMPLOYMENT OPPORTUNITY

**RN MDS Position Available**  
**Full Time Experience Preferred**  
**Sign On Bonus for \$1,500**

Must apply in person  
33426 Old Salisbury Road in Albemarle  
For Questions Call Jana Teal, RN Staff Facilitator  
704-983-1195