

Off Frame Modular



\$77,000 TURN KEY JOB 3 Bedroom
2 Bath

1ST CHOICE HOUSING IN MONROE
2008 East Roosevelt Street
Monroe • 704-225-8850
www.1stchoicemonroe.com



KUBOTA REWARDS It Pays to Own Orange

\$0 Down & 0% Financing for 60 Months*
or Valuable Customer Instant Rebates**



Kubota already sets the bar for well-engineered, high-performance compact tractors. Now we're setting a money saving standard, too. For a limited time, you can save big on your next Kubota – quality equipment that works hard for you today...and holds its value tomorrow.

Smart Engineering • Fuel Efficient • Reliable • Long-lasting Value
Let your authorized dealer show you how rewarding it is to own a Kubota. Offers end June 30, 2012.



**3144 Highway 74 East
Monroe
704-233-4242**

Monday - Friday
7:30 am - 5:30 pm
Saturday 8 am - 12

www.BrooksSales.com

Kubota EVERYTHING YOU VALUE **Kubota Rewards**

*30 down, 0% A.P.R. financing for terms up to 60 months on purchases of select new Kubota equipment from available inventory at participating dealers through 6/30/2012. Example: A 60 month monthly installment payment term at 0% A.P.R. requires 60 payments of \$16.87 per \$1,000 borrowed. 0% A.P.R. interest is available to customers if no dealer documentation preparation fee is charged. Dealer charge for document preparation fee shall be in accordance with state law. Only Kubota and select Kubota performance-matched Land Pride equipment is eligible. Inclusion of ineligible equipment may result in a higher standard A.P.R. Not available for Rental, National Accounts or Governmental customers. 0% A.P.R. and low-rate financing may not be available with customer instant rebate (C.I.R.) offers. Financing is available through Kubota Credit Corporation, U.S.A., 3401 Del Amo Blvd., Torrance, CA 90503, subject to credit approval. Some exceptions apply. **Offer expires 6/30/2012. See us for details on these and other low rate options or go to www.kubota.com for more information. Certain equipment may be shown. **Customer instant rebates (C.I.R.) of \$300 to \$2,500 are available on cash or finance purchases of eligible Kubota equipment through Kubota Tractor Corporation. Dealer subtracts rebate from dealer's pre-rebate selling price on qualifying purchases. Subject to dealership inventory. State to governmental agencies, independent rental centers, and dealer owned rental fleets do not qualify. Some exceptions apply. Customer instant rebates are not available after completed sale. C.I.R. availability ends 6/30/2012. ©Kubota Tractor Corporation, 2012



Cub Scout Twilight Camp

This year a Twilight Camp program has been planned for Anson County Cub Scouts. This camp will be filled with great summer fun like swimming, archery, BB marksmanship, crafts and much more! The camp will take place June 25 to 29 at Little Park, from 5:30 to 8:30 p.m. The Central NC Council on Scouting Activities would like for your son to attend this camp.

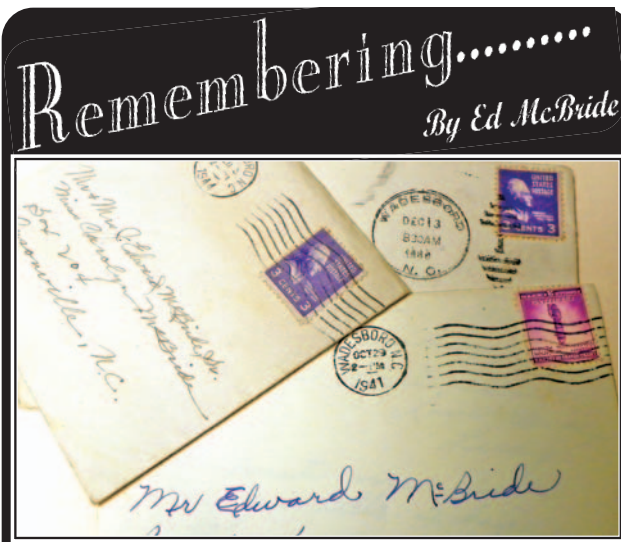
Registration will include a week of fun and classes, a t-shirt, event patch, insurance, crafts and a cookout on Friday. The total cost of the camp is only \$25 if you register before June 20.

Please contact the Central NC Council office for information or to register at 704-982-0141. Also you can call Chris Sanford locally at 704-694-5937 or Devin Canup at 980-621-4915.

Compassionate Friends

The Compassionate Friends, a support group for families who have lost a child of any age or cause, meets Thursday, June 14 at 7 p.m. in the Training Room at Pee Dee Electric on Highway 52 South in Wadesboro.

For information call 704-694-8774 or 704-475-5005.



First Class - 3¢ Postage?

Do you remember the 3¢ postage stamp? Well, not only do I remember that, but I remember some of the rural carriers - none of whom had the privilege of driving their routes on paved roads!

Of course the "old timers" are now deceased, such as John Watson, Fred Eason, George Burns, Sr....and the list goes on and on. There were so very many more!

This actually happened - some of the folks wanting to send a pound of butter, 1/2 dozen eggs or whatever to one of their neighbors on the same mail route would set the package on the mailbox and the carrier took care of it. I heard Lucy's mother tell many stories about the "mailman" years gone by. Sometimes the mailman would be surprised to get fried chicken, pie, cake or some other "goodie" for him and his family's supper.

All this serves to remind you that all the roads are paved now - but the 3¢ first class postage stamp "just ain't no more!" The powers that be "up in Washington" have tried to sell many items to help the postal system - in fact I have collected some!

Any how, we can and do have some great memories of days gone by - paved roads or not. And, we give thanks to so many dedicated carriers through the years!!

Ed

GIVE DAD THE #1 SELLING BRAND IN AMERICA*

STIHL IS THE NUMBER ONE SELLING BRAND OF GASOLINE-POWERED HANDHELD OUTDOOR POWER EQUIPMENT IN AMERICA*

CHAIN SAWS STARTING AT \$179.95 | BLOWERS STARTING AT \$149.95 | TRIMMERS STARTING AT \$159.95

FS 45 TRIMMER **\$159.95**

Easy-to-use, well-balanced trimmer
Lightweight, reliable and fast starting

Can use nylon line or STIHL PolyCut™ head - ideal for lawn trimming or cutting close to fences and walls



FS 55 R TRIMMER **\$219.95**

Versatile, straight-shaft trimmer for around-the-home or light-duty professional use

Can use nylon line or STIHL PolyCut™ head



MS 250 CHAIN SAW **\$299.95**

Features great power-to-weight ratio for quick work of firewood cutting



BR 200 BACKPACK BLOWER **\$279.95**

Simplified starting makes this powerful blower easy to use



WHEN YOU PURCHASE 6 BOTTLES OF STIHL HP ULTRA OIL OR 6 CANS OF STIHL MotoMix™ PREMIXED FUEL Double limited warranty protection applies to STIHL gasoline-powered products purchased and registered for personal non-income producing, family and household purposes only. Other restrictions apply. See dealer for details.

All prices MS-RP. Available at participating dealers while supplies last. © 2012 STIHL MAS12-742-102706-4

Pinkston's

1127 Holly St. | Wadesboro
704-694-5053 | PinkstonsSales.com

*Number one selling brand" is based on syndicated Irwin Broh Research (commercial landscapers) as well as independent consumer research of 2009-2011 U.S. sales and market share data for the gasoline-powered handheld outdoor power equipment category combined sales to consumers and commercial landscapers.

ALWAYS WEAR PROTECTIVE APPAREL WHEN OPERATING ANY OUTDOOR POWER EQUIPMENT. **STIHLdealers.com**

ESTATE AUCTION FRIDAY • JUNE 15 • 10 a.m.

Selling the estate of the late Emma Rayfield 1203 Morven Road • Wadesboro

PARTIAL LISTING: Pine Corner Cabinet * Tiger Oak Library Table * Wing Chair * Marble Top Table * Duncan Phyfe Style Coffee Table * 3 Cushion Tapestry Sofa w/Carved Back * Semi Bow Back Mahogany Ladies Chair * Sanyo TV, VCR, DVD Player * Swivel Rocker Recliner * Rocker * (2) CD Players * White Medical Style Side Table * 3 Cushion Sofa * Wooden Coat Rack * Christmas Decorations * S & P Swinson Food Cookie Jar * Cookbooks, Pyrex, Casserole Dishes * Cake Plates, Egg Plates, Glass Refrigerator, Glass Mixing Bowls, Glass Juicer * Flatware * Rolling Pin, Silver, Red Handled Mixer * Refrigerator Dishes, (2) Jadite Fire King Refrigerator Dishes * Set of (3) Pyrex Mixing Bowls * Old Atlas Jars w/glass tops * Assorted Platters, Kitchenware * Pots, Roaster Pan * Full Size 4 poster bed * 4 Drawer Chest of Drawers * White Full Size Poster Bed, white Nightstand, 4 Drawer Chest, 5 Drawer Chest * 1 Drawer Chest (2 Board Top) * Piano * (2) Queen Anne Chairs * Lawnmower, Garden Tools * Art Deco Hall Tree w/umbrella Stand * Maple Lamp Table * Assorted Artwork, Prints * Large Selection of Costume Jewelry * Assorted Quilts * **PLUS MUCH MORE**

Preview: 8 am morning of auction • Don't miss this one • Terms: 10% Buyers Premium As is, where is • Cash, Debit or Credit Cards. NO American Express or Discover. NO CHECKS Announcements made sale day take precedence over all others. Bring Trucks. Be prepared to move day of sale. Open house on real estate day of auction.

Janet Cox with Pinkston Realty will be on site during auction.

For listing details & photos visit www.auctionzip.com • NCAL 4850
BEN ATKINSON 704-467-4015 ATKINSON AUCTIONS & APPRAISAL