

DR FRED BURNEY ESTATE AUCTION

SATURDAY, DEC. 12TH 10^{AM}

428 MILLS ROAD IN POLKTON

CIRCLE EIGHT AUCTION & REALTY IS HONORED TO OFFER AT PUBLIC AUCTION ITEMS FROM THE ESTATE OF THE LATE DR. FRED A. BURNEY. DR. BURNEY WAS A WELL RESPECTED PHYSICIAN WHO PRACTICED IN ANSON COUNTY FOR MANY YEARS.

Details & Pictures at www.auctionzip.com

CIRCLE EIGHT AUCTION & REALTY
704-272-8381 • NCFL # 6974

OLIVER'S

HOMETOWN RESTAURANT & BAR

1/2 PRICE APPETIZERS
Tuesday-Friday 2-4pm
Dine in Only

OLIVER'S GIFT CERTIFICATES
Make a GREAT Gift!!
AVAILABLE AT OLIVER'S

*Prices subject to change at any time.

EVERYTHING MADE FRESH!
Daily Specials
Homemade Soups & Desserts
Prime Rib Fri & Sat Nights

TUESDAY - FRIDAY OPEN 11AM • SAT OPEN AT NOON
121 EAST WADE STREET IN UPTOWN WADESBORO
CALL FOR TAKE OUT ORDERS 704-694-2206

HOLLA! Kicks Off Fundraising Campaign for Tennis Team

Court repairs urgently needed, founder says

In a release from HOLLA!: Ten years ago, HOLLA! organization founder and CEO Leon Gatewood started Helping Our Loved ones Learn & Achieve in response to hearing startling statistics on the test scores of young African-American men in Anson County Schools. What started as a literacy and learning program has evolved into so much more. In addition to after-school programs and special events designed to get kids reading and learning, HOLLA! now offers a fitness program that includes an award-winning tennis team.

The HOLLA! Eagles Tennis Team was formed in 2011, jump-started by the HOLLA! Let's MOVE Fitness Program to fight obesity among youth.

Gatewood stated that development of the tennis team was a three-year process made possible by support from parents, community members, the Kate B. Reynolds Charitable Trust and the United Way under the direction of HOLLA! Activities Director Alex Gaddy. "We will need continued community support to sustain the project," he added. In fact, the Eagles need the community's support now. The tennis courts are in desperate need of resurfacing and new lighting, as well as new netting and a practice board. Unfortunately those items don't come cheap.

The Eagles also routinely need items like uniforms, equipment and travel expenses to and from tournaments. In fact, the team traveled to Florida earlier this year to participate in a national tournament, and has become a member of the US Tennis Association "In order for these young men and ladies to continue on their paths of success they need their community's support," Gatewood said.

So, in celebration of HOLLA!'s 10 year anniversary and in honor of this team's achievements, the organization is kicking off a fundraiser for the Eagles. It's the season for giving, and since Anson was named the most generous county in the state, Gatewood and other HOLLA! officials expect positive results. The goal is \$25,000.

"It's definitely doable," Gatewood said. "I believe the community will come through for us."

To donate now visit the campaign's gofundme.com page at www.gofundme.com/HOLLAtennis.

Rotary Planetarium to Present Holiday Program, *The Season of Light*

The Wadesboro Rotary Planetarium and Science Center, an Anson County Schools learning resource center, will present a special program that combines astronomy and holiday traditions. *The Season of Light*, a 35 minute full-dome video projected on the planetarium dome, is an elegant and sophisticated program about the coldest and darkest of seasons - a time which holds some of the warmest and brightest celebrations of the year.

This presentation traces the history and development of many of the world's most endearing holiday customs, all of which involve lighting up the winter season - from the burning Yule log, sparkling Christmas tree lights and candles in windows, to the lighting of luminaries in the American Southwest and the traditional ritual of the Hanukkah Menorah.

The show also recounts the historical religious and cultural rituals practiced during the time of winter solstice, not only Christian and Jewish, but also Celtic, Nordic, Roman, Irish, Mexican and Hopi. It also takes a look at some of our more light-hearted seasonal traditions, from gift-giving and kissing under the mistletoe, to songs about lords a-leaping and ladies dancing, and the custom of decking the halls with greenery and candles. St. Nicholas, Sinterklaas, Kris Kringle, Father Christmas and Santa Claus all drop by as well.

Naturally there is some astronomy in *Season of Light*. Audiences learn a selection of Northern hemisphere winter constellations, and find out why we even have seasons, as we demonstrate the Sun's path across the sky throughout the year, and the Earth's tilt and orbit around the Sun. And, of course, the program explores the possible astronomical explanations for a 'Star over Bethlehem' in the last quarter of the show - comets, meteors, novae and supernovae, and planetary conjunctions.

Audiences will also have a chance to experience the planetarium's new full dome projection system, with information on seasonal stargazing as well as a trip through the solar system's planets. A hands-on trip in the animal room, the Lives of the Tree exhibit, the John Kiker exhibit and a look at the extensive mineral collection, donated by Ansonian T. D. Burns, will be available during the visit.

The Season of Light show is designed for all ages. The cost of the show and visiting the animal room at the Science Center is \$5 for adults and \$2 for children. All proceeds from admissions will help finance the purchase of future full-dome digital science shows. Seats are limited in the dome to 20. Reservations are encouraged. Please call the Rotary Planetarium and Science Center at 704-694-4417 ext 01005 and leave a message with your name, contact number, and the number of seats you would like to reserve. Church groups may call and talk with Wendy Efir, Planetarium Director, if they would like to schedule a private showing for their group.

Here is the show schedule: Monday, December 14 at 6 p.m. • Tuesday, December 15 at 6 p.m. • Sunday, December 20 at 4:30 p.m. • Monday, December 21 at 10 a.m. and 2 p.m. • Tuesday, December 22 at 6:30 p.m.

Anson County Board of Elections Meeting Tonight

The Anson County Board of Elections will meet in its Boardroom at 402 Morven Road in Wadesboro on Wednesday, December 9 at 5 p.m. This meeting is open to the public.

The agenda is:

- Call to Order/Invocation • Approval of Minutes • Discussion/Approval of Early Voting Plan • Update on Polling Place Combinations • Upcoming Dates/Events • Other Concerns /Matters • Adjourn

Important upcoming dates are:

- **December 1 - 21** Filing for March Primary Election
- **Thursday, January 14** L&A testing at Board of Elections office, 9 a.m.
- **Friday, January 15** Remove ineligible voters
- **Friday, January 15** 17 year olds who will be 18 by Nov. 8, 2016 can register to vote
- **Monday, January 25** Absentee by Mail Ballots must be available for March 15
- **Saturday, January 30** Begin publishing required election notices
- **Thursday, February 18** Mock Election
- **Friday, February 19** Voter Registration / Party Changes deadline

Bowman Senior High School Class of 1974 Reunion Planning

The Bowman Senior High School Class of 1974 wants each classmate to submit their current address, telephone number and email address in order for plans to be made for a class reunion. Please send the information to 74bearcats@gmail.com.

Give the Gift of Play

DISCOVERY PLACE
KIDS
ROCKINGHAM



Give the gift of Membership and delight them with a year of exploration. Light curiosity and spark imagination in a Museum that celebrates the BIG ideas of our community's littlest residents.

Purchase a Gift Membership Now
910.997.5266 x354 | discoveryplaceKIDS.org

ONLINE ONLY AUCTION

2 DAY ANTIQUE BOTTLES, HISTORIC ITEMS, FURNITURE, POTTERY & MORE

Rockingham, NC - Richmond Co.

Day 1 Ends: Dec. 9th - 6pm
Day 2 Ends: Dec. 10th - 6pm

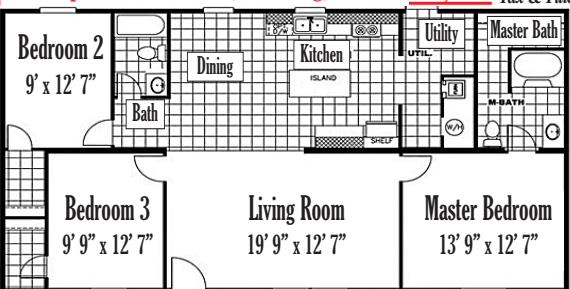
ITEMS LOCATION: 174 AIRPORT RD., ROCKINGHAM, NC 28379

IRON HORSE AUCTION COMPANY
Auctioneers & Brokers
800.997.2248 - NCAL.3936

ironhorseauction.com

THE MONEY HOME Delivered to Site & Set Up

28x48 3 BEDROOM 2 BATH Thermopane Windows, Refrigerator, Range, Dishwasher, Heat Pump, Footings & Brick Skirting, Steps, 200 Amp Electrical Service, Plumbing, Permits \$59,995 Plus Tax & Title



No land improvements included, but can be added.

1ST CHOICE HOME CENTERS
2008 E Roosevelt Street (Hwy 74)
Monroe • 704-225-8850
www.1stchoicemonroe.com



RICHMOND PLAZA

Shop at
Richmond Plaza
this Holiday Season
Rockingham's Premier
Fashion Destination
1305 East Broad Avenue (Hwy 74) in Rockingham

Our line-up of retailers includes:	Hibbett Sports	Foot Locker	Verizon	Stylorama	Cards Plus
	Save A Lot	GNC	Merle Norman	Gifts Four	Lucero's
	Food Store	Little Caesars	DKD Nails	All Seasons	Freedom Fitness
	Belk	Maxway	Firestone	Todd's Computer	Fragrance Outlet
JC Penney	Shoe Show	Radio Shack	First Bank	Fuji Grill	And Much More!



The Compassionate Friends
Supporting Family After a Child Dies

Light a candle for all children who have died

Worldwide Candle Lighting®

... that their light may always shine.

Sunday, December 13, 2015
7 PM Around the Globe

Join the local chapter of the Compassionate Friends at Calvary Episcopal Church on Sunday, December 13 at 7 p.m. for the ceremony in honor of deceased children.