

AHS Student Shymari Robinson Wins Trip to Washington, DC



Pee Dee Electric has announced that Shymari Robinson of Morven has been selected as the 2018 Rural Electric Youth Tourist. Sponsored by the National Rural Electric Cooperatives Association (NRECA) and Pee Dee Electric, the Washington Youth Tour (WYT) is a leadership experience that fuses the history of electric cooperatives and the cooperative business model with that of U.S. government into a once in a lifetime leadership opportunity.

Shymari attends Anson High School where she is currently a junior. She is a member of the National Honor Society, Future Farmers of America, Rotary, and the marching band where she plays three different instruments. Shymari also plays soccer and basketball, all while maintaining a 3.7 GPA and a class rank of 23 out of 190 students. She is considered an outstanding student by both her teachers and peers, and is a ball of energy.

Since 1964 the nation's electric cooperatives have sent more than 50,000 students to Washington, D.C. as part of the Rural Electric Youth Tour. During the Youth Tour Shymari will learn about electric cooperatives and how they operate; American history and how government works; and will spend a day on Capitol Hill with her elected representatives in the House and Senate. She will also participate in National Youth Day and enjoy the sights of D.C.

Approximately 1,600 students from across the United States will join Shymari as they visit monuments such as the Jefferson, Lincoln and Roosevelt memorials, where they can consider the words of great leaders who helped define and uphold our nation. At the Smithsonian Institute they will discover and explore art, science, American culture and nature. They will also reflect on the true price of freedom when visiting the World War II, Korean War, Vietnam Memorials, as well as Arlington National Cemetery.

Pee Dee Electric is a not-for-profit cooperative whose goal is to provide reliable, dependable electric service for its members while focusing on value, quality customer service, and enhancing life in the communities we serve. Pee Dee's service area consists of Anson, Montgomery, Moore, Richmond, Scotland, Stanly and Union counties. For more information about Pee Dee Electric, please visit www.pdeemc.com; like them on Facebook at [PeeDeeElectric.NorthCarolina](https://www.facebook.com/PeeDeeElectric); or follow them on twitter.com/PeeDeeElectric.

HOPE 148 East Morgan Street
Wadesboro
704-690-6689

Pregnancy Resource Center

www.hprc-anson.org hope.prc.anson@gmail.com

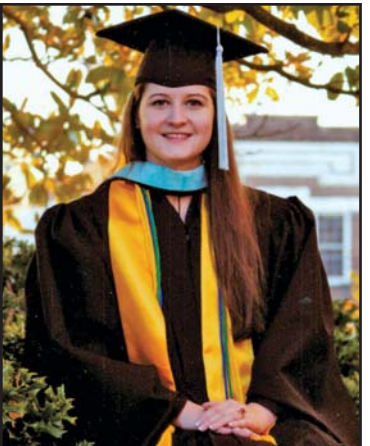
Limited Ultrasounds
Pregnancy Tests
Pregnancy Verification

Clothes Up To 4T
Prenatal, Parenting
& Childbirthing Classes



All services are free and confidential Mon & Tue 1:30-4

Alisha Kay Privette Earns Degree

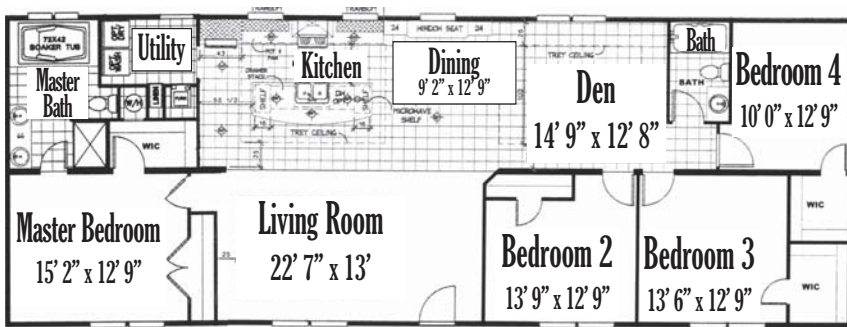


Alisha Kay Privette, a science teacher at Anson High School in the Youth Career Connect STEM Academy Program, has earned her Masters of Science in Education degree with a concentration in Curriculum Instruction and Assessment from Walden University. She graduated with a 4.0 at

the masters level, and was inducted into the Kappa Delta Pi International Honor Society.

Privette is a 2011 graduate of Anson County Early College, also earning an Associates degree. She then continued her education at Arizona State University, graduating with a Bachelor of Science in Health Science with a concentration in Healthy Lifestyle Coaching. She is completing her fourth year of teaching, all four years with the YCC program at Anson High School. In addition, she teaches Phlebotomy for Richmond Community College.

Privette's plans include increasing her certifications in teaching, and returning to school for her doctoral degree. She has taught biology and earth science at Anson High School, and is a teacher-leader in the YCC program - one of only 24 in the entire country.



\$111,995
Delivered to Site
& Set Up
1,920 SQ FT

**4 BEDROOM 2BATH
NO CLOSING COSTS!**



Price includes heat pump, two 4x6 steps + deck, plumbing under home, concrete footings, brick skirting, electrical 200 amp service (home only), setup, blocked & tied down & county permit, tax & title. Land improvements not included - can be added

2008 East Roosevelt Street (Hwy 74)
Monroe • 704-225-8850
www.1stchoicemonroe.com

STORAGE BEDS

BED FEATURES STORAGE IN FRONT & HEADBOARD



- MARTIN FURNITURE IS YOUR ONE STOP FOR:**
- Recliners • Lift Chairs
 - Youth Furniture • Mirrors
 - Appliances • TV Stands
 - Bedroom Sets • Mattresses
 - Gas Fireplaces • Desks
 - Headboards • Dressing Tables
 - Lamps • Jewelry Armoires
 - Accent Cabinets • Tables
 - Appliance Parts • Bookshelves
 - Vacuum Cleaners • Bunk Beds
 - Storage Cabinets
 - Curio & China Cabinets
 - Coffee Tables • Kitchen Carts
 - Chaise Lounges...and more!!!



**NEW ARRIVAL!
SLEEPER SOFA SET**



We have **HEATERS**
KEROSENE • GAS
ELECTRIC • WOOD

VISIT OUR SLEEP SHOP

BEAUTIFUL WOOD FINISH!



SAME OR NEXT DAY DELIVERY!

WATER HEATERS

LOCAL DELIVERY \$25
Check Our Clearance Section

WE FINANCE

**EZ TO APPLY
OWN IT NOW!**

MARTIN FURNITURE FACTORY OUTLET

Highway 74 West in Wadesboro • 704-694-3185