

The Burnsville Recreation & Learning Center Emergency Food Pantry will distribute TEFAP food products on Monday, May 9, from 1 to 4 p.m. The food to be distributed includes chicken leg quarters and other items. It will be given out until it is gone. The food commodities are provided by the United States Department of Agriculture.

Federal income guidelines will be the determining factor for each applicant's eligibility. Food items will only be available to Ansonians who qualify. BRLC does not discriminate for any reason. Individuals who have not registered or received food before must have documentation as to proof of income. Each family will only be provided these commodities once a month, to one adult per family. Due to the limit parking and heat, please do not arrive before 1 p.m.

BRLC is located at 13349 Highway 742 North in Burnsville, across from the Fire Department. The telephone number is 704-826-8737.

### Learn How to Feel Better...Healthier...Happier

Living with or caring for someone with Diabetes can affect your quality of life. This six-week Living Healthy with Diabetes workshop is designed to help you better manage your Diabetes and live a happier, healthier life!

There is no fee and participants will receive incentives for attending.

You don't have to stop doing the things you love to do. The key to getting the most out of life is learning to manage your symptoms. No matter your situation, Living Healthy with Diabetes can assist you in taking control. Whether you have been recently diagnosed with diabetes or have had diabetes for years this workshop will give the support you need to find practical ways to deal with your stress, discover better nutrition and exercise choices, and learn better ways to talk with your doctor and family about your health. Previous participants have stated they have benefited from this class more than any other diabetes class they have attended.

The Living Healthy with Diabetes classes will be held at the Grace Senior Center, located at 199 Highway 742 South (just past IGA) in Wadesboro. This is a six week class that is scheduled for every Thursday, from 1 to 3:30 p.m. starting May 5 and running through June 9. Class size is limited and registration is required. Call Rita Short at 704-694-6217 or 704-994-3494 and start living healthy!

### Anson County 4-H to Host Summer Adventure Camp

Many of the youth in the county have received brochures through their school in regards to the Summer Adventure Camp program coordinated by Anson County 4-H. This year's Summer Adventure Camp will bring more adventure, education and fun activities than ever before! The dates and themes of the camps are listed below

- Week 1** Cloverbud Camp - June 21-23, 5-8 years, \$35, Limit: 22
- Week 2** Day Camp at Millstone 4-H Center - July 4-8, 9-14 years, \$100, Limit: 25
- Week 3** All things Science - July 12-14, 9-12 years, \$35, Limit 25
- Week 4** Cloverbud Camp - July 26-28, 5-8 years, \$35, Limit: 22

All time of camps are 10 a.m. until 4 p.m. unless otherwise stated. Remember, you do not have to be enrolled in 4-H to participate in the summer fun programs. The cost for each week includes snacks, all supplies and cost of trips during that week.

Registration begins Tuesday, May 17 at 8:30 a.m. Don't wait too long to sign up for these programs, classes are limited and registering will be on a first come, first serve basis. So start bringing forms in as soon as possible! Remember adults must come and register youth at the Extension Office, located at 501 McLaurin Street in Wadesboro.

If you have not seen a brochure or if you have questions about any of the weeks of camp, please call the Extension Office at 704-694-2915 for more details.

### This is National Teacher Appreciation Week

Teachers in Anson County and in communities across the nation are in the spotlight during National Teacher Appreciation Week, May 2-6, as students, parents, school administrators and the general public learns how teachers are making great public schools for every student. Few other professionals touch as many people as teachers do. As an educator for 30 years, a member of the North Carolina Association of Educators/Anson County Association of Educators and most importantly, grandparent to Peachland-Polkton Elementary School Second Grader, Kamryn Winfield, I am truly aware of the efforts made by teachers and parents (the strongest teacher) to mold children into productive members of society.

National Teacher Appreciation Week is a good time to learn about the contributions educators make to our community every day. We recognize we are role models. That brings satisfaction. It also brings responsibility. We want to take it to the next step. We believe we all have to work together to make our schools even better. That means everyone in the community; parents, business owners, retirees, other workers, local government, and yes, students. Public schools are at the heart of any community. When there are problems, we address them. When there are kudos, we share them.

This year the teachers and para-teachers at Lilesville Elementary School— Camille Ballard, Sharon Belcher, Emily Bowers, Melinda Corbett, Paul Currie, Tina Currie, Lauren Dugan, Susan Fowler, Katie Gaddy, Deborah Gathings, Stacy Harrington, Stephanie Harward, Dusty Hunter, Lori Ingram, Gloria Lilly, Thomas Martin, Cheryl McLeod, Dale Rivers, Jackie Rivers, Mary Kait Rivers, Lynn Sheppard, Cindy Sikes, Maggie Staton, Monica Stokes, Tiffany Tallent, Joan Waring, Natalie Williams, Sammi Williams, and myself— have made a conscious effort to give back to the community through various activities. We have participated in events such as the American Cancer Society's Relay for Life, Special Olympics, the Law Enforcement Torch Run for Special Olympics, the United Way of Central Carolinas, Toys for Tots, the "Souper" Bowl for the Anson County Domestic Violence Coalition, and many more.

Community involvement brings learning to life. This is an opportunity for all of us to reach out to each other. I ask the community to learn about how we advocate for high standards for students, fair and meaningful evaluations of their work, and resources that go directly to the classroom. Better than an apple or a thank you card, a community's active support of the work we mutually do to teach and care for the community's students would be ample reward for all of us.

This article is courtesy of Maresa Dutton Phillips, Principal at Lilesville Elementary School.

### South Piedmont Community College to Host Annual Multicultural Festival on May 6-7

South Piedmont Community College will host its third annual Multicultural Festival on May 6-7 at its Old Charlotte Highway Campus (4209 Old Charlotte Hwy., Monroe). The event will run from noon until 2 p.m. on Friday and from noon until 5 p.m. on Saturday. The festival is free and open to the public.

Both days will be filled with international dance demonstrations, cooking demonstrations, henna hand painting, haiku poetry writing, martial arts demonstrations, interactive activities for young children and much more.

For a full schedule of festival events, visit [www.spcc.edu](http://www.spcc.edu).

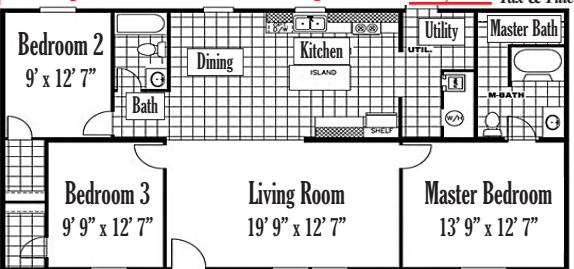
For more information, contact Anjella Tabor-Smith at (704) 290-5891 or [asmith@spcc.edu](mailto:asmith@spcc.edu).

### Bingo at Grace Senior Center

Bingo games are held every third Tuesday of the month at Grace Senior Center at 1 p.m. All seniors are invited to attend for fun and fellowship. For more information or to register to play call the center at 704-694-6616.

### THE MONEY HOME Delivered to Site & Set Up

28x48 3 BEDROOM 2 BATH Thermopane Windows, Refrigerator, Range, Dishwasher, Heat Pump, Footings & Brick Skirting, Steps, 200 Amp Electrical Service, Plumbing, Permits \$59,995 Plus Tax & Title



No land improvements included, but can be added.  
**1ST CHOICE HOME CENTERS**  
 2008 E Roosevelt Street (Hwy 74)  
 Monroe • 704-225-8850  
[www.1stchoicemonroe.com](http://www.1stchoicemonroe.com)

Celebrate with us!!!

**CINCO DE MAYO SPECIALS!**  
 Aroz con Pollo \$7.99  
 All Mixed Drinks On Special!

Try Our New Sweet Chipotle Chicken or Beef \$7.99  
 Or Our New Sweet Chipotle Shrimp \$8.99 It is Good!!!

1214 East Caswell Street • Highway 74  
 704-694-4919 • Fax 704-694-2679

**NC Inspection**  
**Oil Change**  
**Tire Repair**  
**Drinks**  
**Snacks**  
**EAST WADE GULF**  
 Across from Police Station on Washington Street in Wadesboro  
**704-694-2787**  
**Alan Jackson**

**The 3rd Annual TERRY JORDAN INVITATIONAL GOLF TOURNAMENT**  
 Sponsored by the GUM SPRINGS BAPTIST CHURCH YOUTH

Saturday, May 7 2pm Shotgun Start  
 Twin Valley Country Club

2 Man Captains Choice • 1 A Player per team  
 \$40 per person Includes golf & cart  
 Mulligans will be sold!  
 Split the pot on hole 14!

Contact: Lynn Whitlock 704-695-2200  
 Or: Johnny Goodwin 704-475-1304  
 Sign up sheet also be available at the Twin Valley Country Club

## OLIVER'S HOMETOWN RESTAURANT & BAR

**COME CHECK OUT OUR NEW SALAD BAR**

**NEW HOURS**  
 Tuesdays & Wednesdays...5pm - 9pm  
 Thursdays...11am - 9pm  
 Fridays...11am - 10pm  
 Saturday...12 noon - 10pm  
 Closed Sunday & Monday

**Daily Specials**  
**Homemade Soups & Desserts**  
**Prime Rib Fri & Sat Nights**

OLIVER'S HOMETOWN RESTAURANT & BAR  
 121 EAST WADE STREET IN UPTOWN WADESBORO  
 CALL FOR TAKE OUT ORDERS 704-694-2206

## TRUCK DRIVER TRAINING



**Find Your Career in One of the Fastest Growing Industries!**

**June 13 - August 12, 2016**  
**8 am - 5 pm, M - F**

### MANDATORY ORIENTATION

May 19, 2016 • 11 am, (one-hour)

Held at SPCC, CTHE Building  
 3509 Old Charlotte Hwy., Rm. 1303  
 Monroe, NC 28110

Offered in Partnership with Caldwell Community College & Technical Institute

For additional information, contact:

Roger Chester, 828.726.2386.  
[rchester@cccti.edu](mailto:rchester@cccti.edu)  
 Scott Rivers, 704.272.5468,  
[srivers@spcc.edu](mailto:srivers@spcc.edu)

The truck driving program offers extensive classroom as well as range and road driving to prepare you for your new career! The Commercial Driver's License (CDL) final test will be administered at the conclusion of the course.



[www.spcc.edu](http://www.spcc.edu)