

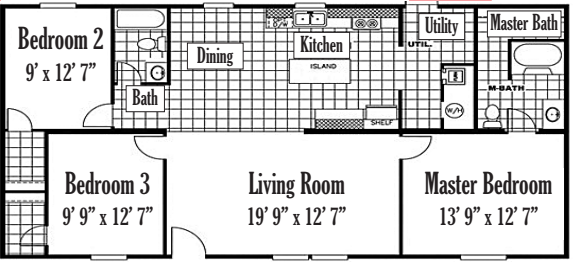
Another Great Chamber Open!

This is a release from the Anson County Chamber of Commerce: The Anson County Chamber of Commerce held their 16th annual "Chamber Open", better known as, The "Premier Golf Event of Anson County" on Friday April 22nd at Twin Valley Country Club. With teams booked and many volunteers lined up everyone was prepared for a great tournament. Players had their choice of an 8:00am or 1:00pm tee time, and with sunshine in the morning and some showers possible for the afternoon, it was sure to be a great day for golf!

This "Premier" Golf Event of Anson County would not be as successful as it is without the support of the sponsors, volunteers and especially the golfers. Shelby Emrich, Interim Executive Director, thanked the Presenting Co-Sponsor for this year, Waste Connections of the Carolinas, as well as Coca-Cola, Pepsi, Tyson, Refreshment Services Inc., R.A. Jefferies, Uwharrie Bank and IGA of Wadesboro. She also thanked Russell Sikes of Plank Road Realty for cooking all the chicken. There were many others to thank for their contributions to the event such as, Rep. Mark Brody for being the Lunch Sponsor. Much appreciation went to Ambassador Health and Rehab of Wadesboro and H.W. Little Hardware for being the Raffle Sponsors. Several folks donated goodie bag items; Plank Road Realty, Lifetouch, Carolinas HealthCare System, Pee Dee Electric, Turner & Tyson CPA, Waste Connections of the Carolinas and State Farm, which were certainly appreciated as well as those that sponsored teams and hole signs. The Drink Cart Sponsors this year were Anson Family Optometric and Kiker Resource Management. The Hole In One Sponsor was Anson Health and Rehabilitation. A huge thanks went to Pee Dee Electric for the use of their bucket truck for the Ball Drop which is always a fun event at the tournament, and Eli Randall of Pee Dee for operating it. Emrich also thanked Mitch Moretz for coming back to lend a hand and the staff at Twin Valley Country Club for their support. "I have to give huge thank you to the Golf Committee; Terri Martin, Brandon Chewning, Jilla Gath-

THE MONEY HOME Delivered to Site & Set Up

28x48 3 BEDROOM 2 BATH Thermopane Windows, Refrigerator, Range, Dishwasher, Heat Pump, Footings & Brick Skirting, Steps, 200 Amp Electrical Service, Plumbing, Permits \$59,995 Plus Tax & Title



No land improvements included, but can be added.
1st CHOICE HOME CENTERS
 2008 E Roosevelt Street (Hwy 74)
 Monroe • 704-225-8850
 www.1stchoicemonroe.com



First Place Winners, from left are Darrell Poe, Alan Hildreth, Fred Sparger and Barry James.



Second Place finishers are, from left, John Martin, Ronald Diggs, Johnny Martin and Jay Vernon.



Third Place finishers are, from left, Nathan Goodwin, Ronnie Barnhill, David Burns and Kyle Eudy.

ings, Tommy Allen, and Ryan Teal" expressed Emrich. She went on to say that without these wonderful volunteers this event would not be as successful and she appreciated each one of them. She also gave a big thanks to Scott Collier and the 2016 Leadership Anson Class, Julian Swittenberg, Susan Thomas, and Bailey and Madison Emrich for helping out as well. "I also want to thank the Chamber Board of Directors for all their help and support", Emrich stated.

Winners; First place winners of the tournament were, B & B Pest Control (Barry James, Alan Hildreth, Darrell Poe & Fred Sparger), in at second was Wadesboro Tire & Automotive (John Martin, Jay Vernon, Johnny Martin and Ronald Diggs) and coming in third was Uwharrie Bank (Kyle Eudy, David Burns, Nathan Goodwin and Ronnie Barnhill). The winner of the Split- the-Pot was Ginger Phillips. The winner of the "Golf Ball Drop" was JR Hasty. Longest Putt went to Danny McRae for the morning and Bob Hill for the afternoon. Longest Drive went to James Clontz for the morning and Lewis Adams for the afternoon. Closest to the Pin was Arnold Smith for the morning and Mike Vetter for the afternoon. This year's raffle winners were Todd Parker for the grill and the patio heater went to Todd Pegram. Congratulations to all of the winners! "Thank you all so very much for the support to continually make this event the "Premier" event that it is," Emrich stated.

Mark your calendars now for 2017 so you won't miss the "Premier Golf Event of Anson County" April 7, 2017.

Retired School Personnel Meeting is May 17

Manzell Spencer, President of the Anson County NC Retired School Personnel, invites all retirees to attend their next meeting on Tuesday, May 17 at 10 a.m. in the Pritchett Room at the Hampton B. Allen Library. Plans for an end of year luncheon will be finalized, and the 2016 scholarship recipient will be named. Also, important legislative information will be discussed.

All retirees are urged to come and be a part of helping to make Anson County's local unit one of the best in the state. For more information call Spencer at 704-694-4615.

OLIVER'S HOMETOWN RESTAURANT & BAR

COME CHECK OUT OUR NEW SALAD BAR

Daily Specials
 Homemade Soups & Desserts
 Prime Rib Fri & Sat Nights

OLIVER'S HOMETOWN RESTAURANT & BAR
 121 EAST WADE STREET IN UPTOWN WADESBORO
 CALL FOR TAKE OUT ORDERS 704-694-2206
 TUE & WED 5-9 + THUR 11-9 + FRI 11-10 + SAT 12-10

NWHW NATIONAL WOMEN'S HEALTH WEEK

Need help meeting your health goals?

Who doesn't?

Schedule your annual well-woman visit during National Women's Health Week to get started.

For more information visit go.usa.gov/csrZm

Call for an appointment at the Anson County Health Department 704-694-5188

ANSON COUNTY HEALTH DEPARTMENT
 110 Ashe Street • Wadesboro NC 28170

Your success is our success.
 Quality performance at a price you can afford.



1023E Sub-Compact Utility Tractor

3032E Compact Utility Tractor

- 23 hp⁵ engine
- Hydrostatic transmission
- 4WD increases traction, productivity and efficiency
- Available iMatch™ AutoHitch™ easily connects to attachments

- 32 hp⁴ engine
- Hydro transmission with Twin Touch™ pedals for ease-of-use
- Standard 4WD for maximum traction
- Category 1 3-pt hitch compatible with dozens of implements

\$99/MONTH¹

\$135/MONTH²

QualityEquip.com



Wadesboro 894 Hwy 52 S.

¹Offer valid on new 1023E Compact Tractor purchases made between 4/11/2016 and 8/2/2016. Prices and model availability may vary by dealer. Subject to approved installment credit with John Deere Financial. Monthly payment of \$99.00 based upon 20% down plus 0.0% for 84 months on the 1023E Compact Tractor. ²Offer valid through 8/2/2016. Prices and model availability may vary by dealer. Subject to approved installment credit with John Deere Financial. Monthly payment of \$135.00 based upon 20% down plus 0.0% for 84 months and \$3,200 OFF on a 3032E Compact Utility Tractor. Taxes, setup, delivery, freight, and preparation charges not included. Eligibility for the down payment offer is limited to qualified customers and scheduled monthly payments will be required. Some restrictions apply; other special rates and terms may be available, so see your dealer for details and other financing options. Valid only at participating US dealers. ³Beginning 1/1/2016 all Compact Utility Tractors purchased new from an authorized John Deere Dealer come standard with a 6-year/2000 hour (whichever comes first) Powertrain Warranty. See the Limited Warranty for New John Deere Turf & Utility Equipment at dealer for details. ⁴Manufacturer's estimate of Power (ISO) Per 97/68/EC. ⁵The engine horsepower and torque information are provided by the engine manufacturer to be used for comparison purposes only. Actual operating horsepower and torque will be less. Refer to the engine manufacturer's website for additional information. QEL5X110511AE-4C



JOHN DEERE



QUALITY EQUIPMENT, LLC