

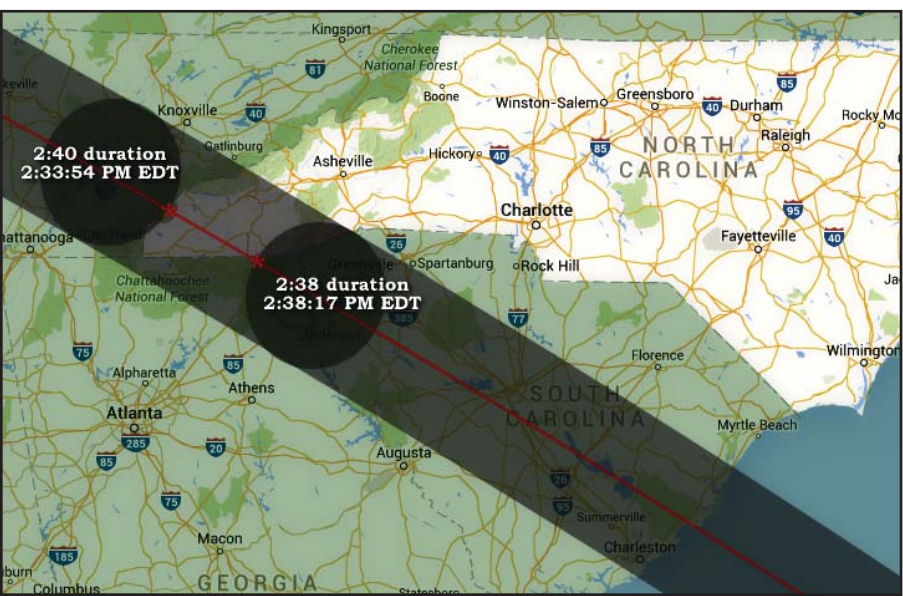
165  
Bulk Rate  
U.S. Postage  
PAID  
Permit # 149  
Wadesboro, NC  
28170

Postal  
Customer

# THE EXPRESS

205 West Morgan Street • Wadesboro, NC 28170 • 704-694-2480 • [TheExpressNews@gmail.com](mailto:TheExpressNews@gmail.com) • [www.TheExpressNewspaper.com](http://www.TheExpressNewspaper.com)

Serving Anson County and the Municipalities of Ansonville, Lilesville, McFarlan, Morven, Peachland, Polkton and Wadesboro.



## Solar Eclipse will Occur on Monday, August 21

In just a couple of weeks on August 21 a rare celestial event will occur, a total solar eclipse. Well that depends on geographically where you happen to be. In Anson County it will be 97.5% total. This will be almost a total eclipse, and will be a most interesting event. If you drive below Columbia, South Carolina or Andrews, North Carolina you can see it in 100% total.

The eclipse will be traveling from west to east, and at around 2:35 p.m. the sun will become very close to disappearing behind the moon's shadow. Full eclipse, or at least 97.5% total in Wadesboro, will occur between 2:41 and 2:45 p.m. It will become very dark. Cars will be using headlights; the temperature will drop about 10 degrees; animals will begin bedding down thinking it is night time. The eclipse will last about two and one half minutes and the sun will begin peaking back around the shadow of the moon.

Please stop by the Anson County Historical Society's "Eclipse Exhibit" in the window of the Belk building. Here you will see photographs and information from the 1900 eclipse plus information on the upcoming eclipse. On Saturday, August 19, from 10 a.m. until 2 p.m. the Rotary Planetarium will be open with programs on the eclipse; history of the 1900 eclipse, science projects and a robotic demonstration. Admission is free.

**Also, remember it is very dangerous to look directly at the sun.** Free "eclipse viewing glasses" are available at these locations: the Anson County Chamber of Commerce; the Historical Society Office, the Anson County Health Department and the Wadesboro Town Hall.

On Monday, August 21 the Moon's shadow along the centerline crosses the mountain border of North Carolina to the west of Robbinsville at 2:33:54 p.m. Totality lasts 2 minutes, 39 seconds and the path of totality (total eclipse) is 71.7 miles wide.

The path of totality crosses the westernmost end of North Carolina, passing entirely within the Great Smoky Mountain National Park, and the Nantahala National Forest. At the centerline, the moon's shadow passes over 42 miles of the state of North Carolina in the span of 4 minutes, 13 seconds, at an average speed of 1,440 miles per hour, or 1.89 times the speed of sound.

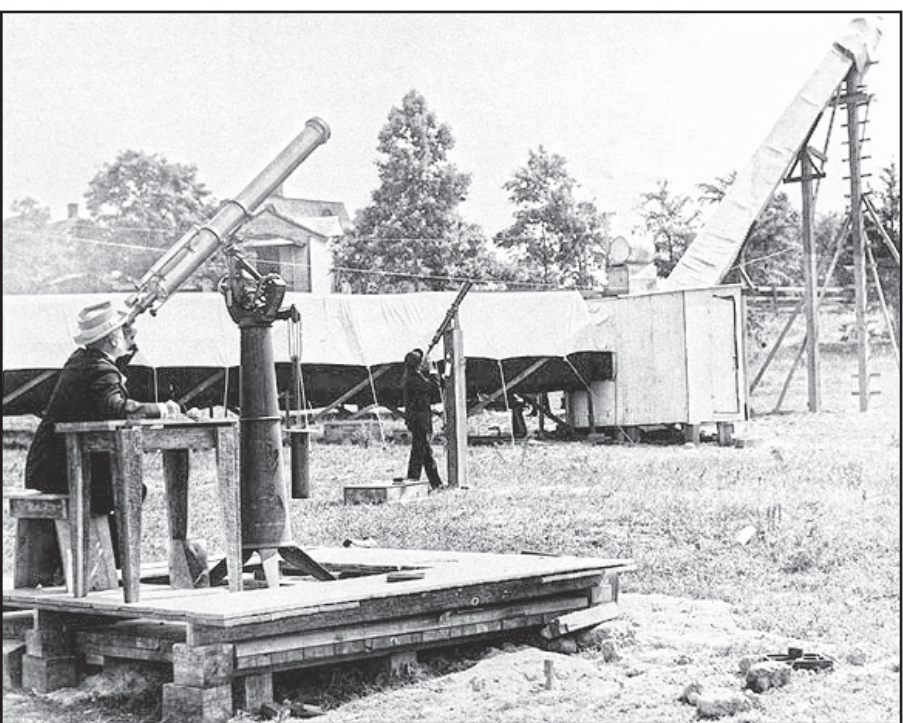
Wadesboro was highly involved in the last total lunar eclipse. On May 28, 1900, another total solar eclipse occurred across the United States. That line of totality crossed directly over Wadesboro. Other towns were in the line of the eclipse, but Wadesboro was chosen because of its climate and elevation. Scientist had studied weather and cloud movements for three years prior and determined Wadesboro was the mostly likely setting that would give scientist the best view of the heavenly event.

Wadesboro was also close to a main rail line where scientist could bring in equipment needed to photo and measure the events. The rail line also made for easy access by the hundreds of scientist and news reporters from around the world, well as the thousands of visitors who came to Wadesboro to witness a once in a life time event.

Anson County and Wadesboro drew worldwide attention in 1900 for that eclipse. The Anson County Historical Society has voluminous files that include newspaper articles, scientific reports and papers, and photographs that are all available for public viewing. It gives us a snapshot picture of life in Anson County 117 years ago.

Even today, 117 years later, scientist will continue to study this eclipse with interest and curiosity. Along the eclipse path, hotels and motels have long been booked up for this coming event. If you choose to view the eclipse in Anson County you really won't be disappointed. Around mid-day on Monday, August 21, the moon will begin its path between earth and the sun. For the next couple of hours the sun will gradually become overshadowed.

August 21 will be a historical day across the United States. As that date approaches take some time to look up information on the 1900 eclipse as well as the 2017 eclipse.



In this photo, Samuel P. Langley, an astrophysist who was the third Secretary of the Smithsonian Institution, is pictured at the far left. He and a large team of scientists chose Wadesboro as the best place in the world to view the solar eclipse of May 28, 1900. They set up an array of equipment, including several very large telescopes.

## Pee Dee Electric Announces New Energy Efficiency Loan Program

Beginning this month, Pee Dee Electric is offering a new Energy Efficiency Loan program to its members. Developed with the member in mind, Energy Efficiency Loans are available to qualified members who want to increase the efficiency of their homes.

With the help of Pee Dee Electric, members can now borrow funds from the cooperative and repay the loan through their monthly electric bill. Loans from \$400 to \$7,000 are available and can be used towards new electric heat pumps; duct repair or replacement; insulation for ceilings, walls or floors; window and door upgrades; electric water heaters; and caulking or weather stripping.

Loans are available to any member of Pee Dee Electric who owns an existing home served by the cooperative and who receives a monthly electric bill. Applicants must have had service with Pee Dee for at least two years and have a good credit history established with the cooperative and with Online Utility.

For more information about Energy Efficiency Loans through Pee Dee Electric, members are encouraged to visit [PDEMC.com](http://PDEMC.com), or call the cooperative directly at 704-694-2114.



## September 8 Tams Concert at the Ansonia Sold Out, So Second Performance Added for Thursday, September 7

The Tams are kicking off the season at the Ansonia Theatre in Wadesboro, and their performance sold out before they ever actually went on sale to the general public. Because tickets for their performance on September 8 went quickly to sponsors and to season ticket holders, the Ansonia has added a another performance on Thursday, September 7 at 7:30pm. Those tickets will go on sale Monday, August 14 at 10 a.m. to the general public.

Season tickets are on sale now and the season includes the Tams, *To Kill a Mockingbird*, *Forever Patsy Cline: Tales from the Road*, *Annie*, *Joshua Loff: Life is Magic* and *Smoke on the Mountain*. Season tickets are only \$80. Call 704-694-4950 for tickets.

## Anson Ag Fair is Set for the End of September

Anson County Cooperative Extension is pleased to announce plans for the 2017 Anson Ag Fair, set for Saturday, September 23. The 2017 Fair Rules and Regulations Booklets have arrived and are now available at the Cooperative Extension Center at 501 McLaurin Street.

The fair book is also available online at [anson.ces.ncsu.edu](http://anson.ces.ncsu.edu). Click on the 2017 Anson Ag Expo & Fair link, and the book can be downloaded in pdf format, complete with registration forms. Information is also available on the Anson County Cooperative Extension Facebook page.

If you have a green thumb, an artistic eye, or a flair for crafts, now is the time to start planning items to enter into this year's county fair. Set aside a jar of canned goods that turned out better than you planned. Finish up a craft project you have been working on.

The County Fair portion of the thirteenth annual Anson Ag Expo and Fair will be held Saturday, September 23 at the Extension Center on McLaurin Street in Wadesboro, from 9 a.m. until 2 p.m. It will be here sooner than you think.

Crafts, canned goods, ag products, photography, art and handicrafts will be welcomed for competition. Take down your vacation photo from the fridge and frame it. Add fertilizer to that favorite plant. Then bring them all down to the Extension Center and enter them in the fair!

Remember that fair participation is open to youth as well as adults. Age groups available for competition consist of: Pee Wee - 0 to 5 years, Pre-teen - 6 to 12, Teen - 13 to 19, and Adult - 20 and up. Now is the time to be planning to show off your talents at the fair!

Registration for all entries will be taken in on Thursday, September 21 from 8 a.m. until 7 p.m. The fair will be judged on Friday and open to the public for display on Saturday from 9 a.m. through 2 p.m.

Items can also be entered into the "In Memoriam" and "Blast from the Past" categories. Items made by deceased loved ones can be entered in "In Memoriam" while items made prior to 2002 and never shown in a fair can be entered in "Blast from the Past".

Cash premiums will be awarded from \$5 for first through \$2 for third in over 200 categories. Last year's county fair showcased 248 entries from 53 fair exhibitors, and \$873 was paid out in fair premiums. Class ribbons are awarded for all entries, with Best of Show and Juror's Choice ribbons awarded for each competition area per age division.

For additional information, contact the Anson County Cooperative Extension Service at 704-694-2415. Come out and join the fun. There is something for everyone. Celebrate agriculture in Anson.

## Anson Middle School Fall Sports

Any 6th, 7th or 8th grade student wishing to try out or participate in middle school sports must have a current sports physical. Please provide your coach with a copy before attending practice.

Football practice will start on Saturday, August 19 at Anson Middle School, from 4 to 6 p.m. Sixth grade students cannot participate in football.

Golf, Cross Country, and Volleyball tryouts will start the week of September 5-8.

For more information contact John W. Martin, AMS Athletic Director, at 704-694-3945 ext. 09621.

## School Supplies Donations Collected at Walmart this Friday and Saturday

The Faith Based Center of Hope and Harvest Ministries will be set up at Walmart in Wadesboro to accept donations for their Back to School Giveaway. They will gratefully accept donations of supplies or funds with which they can purchase supplies.

They will be onsite this Friday and Saturday, August 11 and 12, from 10 a.m. to 5 p.m. Look for their tents near the doors.

100 percent of the donations will be used to benefit area students who really need that boost to succeed in school. Thank you in advance for any help you can offer.

If you cannot make it to see them during these times but would like to contribute, please call Vancine Sturdivant at 704-848-4412 or Steve Adams at 704-695-2879.

## ACEC 9th Grade Orientation

Orientation for rising 9th grade students at Anson County Early College will be held on Tuesday, August 15 at 5:30 p.m. at ACEC.

## Fundraiser Spaghetti Dinner for Baby Emeline Burr

There will be a Spaghetti Dinner to raise funds to help pay the medical expenses for baby Emeline Burr. Emeline is the daughter of Kimberly and Jesse Burr. She was born prematurely on April 11, 2017, and is fighting through medical challenges associated with her premature birth.

The Spaghetti Dinner will be held at the Anson Rescue Squad building on East Morgan Street in Wadesboro this Friday, August 11, serving lunch and dinner throughout the day. They will begin serving at 11 a.m., and continue until they are sold out. The serving will include spaghetti, slaw, a roll, dessert and a drink for \$8 per plate. Deliveries will be made for orders of 10 plates or more. Call 704-475-5995.

There will be several items up for raffle too.

## Free School Book Bags and Supplies this Saturday, August 12

Free book bags and school supplies will be available for students of all ages this Saturday, August 12 at 10 a.m. in front of the Anson Crisis Ministry, located at 117 North Rutherford Street in uptown Wadesboro.

Each student must be present to receive a book bag. The event is sponsored by The Lamb of God Outreach in Chesterfield.

For more information call 704-694-2445.

## Auditions for To Kill a Mockingbird at Ansonia Theatre

The Ansonia Theatre will be having auditions for *To Kill a Mockingbird* on Tuesday August 15 at 6 p.m. Looking for all ages and types! Be prepared to read from the script. There are portions of the script that you can pick up at the Arts Council.

For more info contact 704-694-4950. If you are interested in auditioning but are unable to make it on the 15th, please call and the Arts Council will make other arrangements to see you.

Director Tommy Wooten said, "I'm looking forward to bringing this classic to life! See you at the theatre!"