



BACK TO SCHOOL

Does Your Child's Eyesight Make the Grade?

Vision problems are a leading cause of school performance problems, so be sure your child can see clearly at school. Make an appointment with Dr. Kiker today for a complete eye exam.






ANSON FAMILY OPTOMETRIC, PLLC.



Holly Allison Kiker, OD

1134 Holly Street in Wadesboro (On Highway 74 across from Forbes Jewelers)
 Mon-Thurs 8:30-5 & Friday 8:30-12:30 704-694-3618



Logan Goodwin Presents More Stuffed Animals

For the eighth year in a row Logan Goodwin and his grandmother Diane Goodwin brought dozens of new stuffed animals and cartoon figures to the Anson County Sheriff's Office to be given out to children in crisis situations. Since Logan began this project other organizations and individuals have also provided similar items to the Sheriff. "He really started a trend. We share these with other law enforcement agencies as well as the domestic violence organization and DSS. When a child is given a soft, stuffed animal figure at an accident scene or other situation, you can bet it's because of this program Logan started eight years ago," Sheriff Tommy Allen said.

Sheriff Allen said that he estimates that over the past eight years his officers and others have given away over 1,500 teddy bears and other figures. "Children can be caught in the middle of some of life's most harsh situations," Allen said. "It may be at an accident scene, at the hospital or even when officers are called to their homes where parents are fighting. It's not their fault but they are so often upset. These stuffed animals and figures gives a frightened child something secure to hold on to. You just don't know until you've seen this."

"Logan told me that this was one of the most exciting times of the year for him to get to bring all these bags of stuffed animals to the Sheriff's Office because he knows it will help some little child. I want to thank Logan, his grandmother Diane and certainly his parents, Bruce and Kitt Goodwin, as well as all the other supporters of this project over these past eight years," Allen said.

The Sheriff's Office accepts new and like-new stuffed toys, animals and figures for this project during regular business days and office hours.

OLIVER'S HOMETOWN RESTAURANT & BAR

EVERYTHING MADE FRESH!

Daily Specials

Homemade Soups & Desserts

TUESDAY - FRIDAY OPEN 11AM • SAT & SUN OPEN NOON

121 EAST WADE STREET IN UPTOWN WADESBORO

CALL FOR TO GO ORDERS 704-694-2206

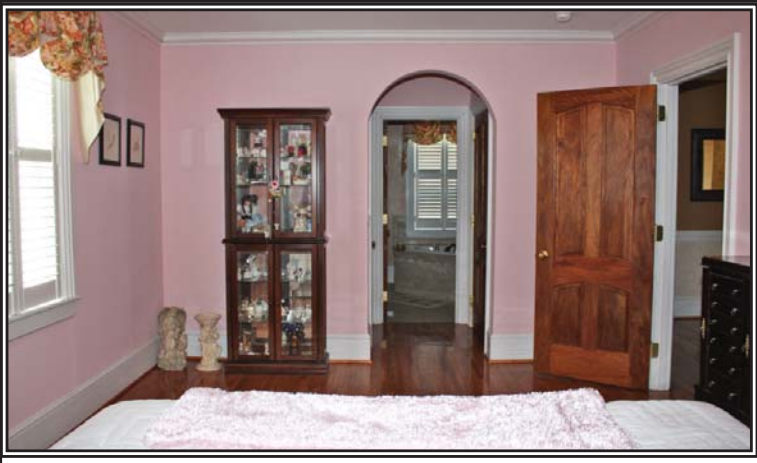
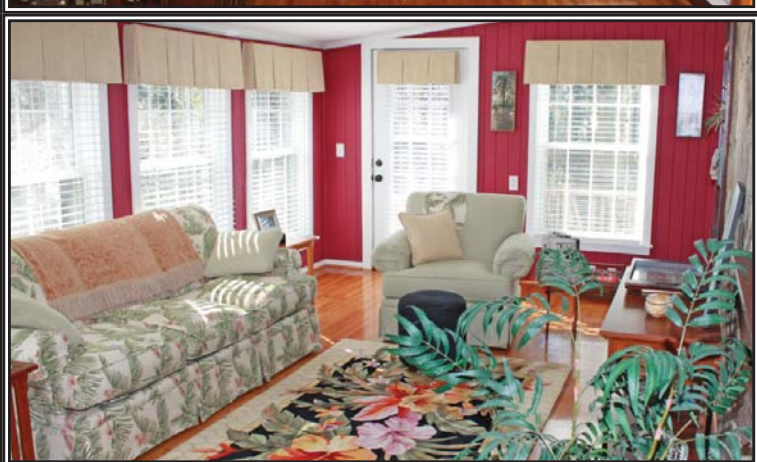
Wadesboro Apartment Project Among 39 Receiving Tax Credits

Federal tax credits and other financing awarded Friday, August 15 will build \$423 million of affordable apartments in 37 North Carolina counties. The work is expected to support 8,540 jobs and generate more than \$13.4 million in local tax revenue.

In Anson County a project called Abbington Grove of Wadesboro received ten years of annual tax credits of \$412,500 to build 48 new family dwellings. This apartment development has received Brock Ventures, Inc zoning approval, but has not begun construction. It will be located at the intersection of Highways 74 West and 52 North. The project is in the name of KRP Investments, LLC with Karen Perry as the contact (336-817-9400). It is not a nonprofit development.

Tax credits and bond authority were approved by the North Carolina Federal Tax Reform Allocation Committee, based on recommendations from the North Carolina Housing Finance Agency.

"These affordable apartment developments will provide housing opportunities for working families and seniors," said Bob Kucab, executive director of the N.C. Housing Finance Agency. "They also will help to improve communities, keep thousands of North Carolinians working in construction and related industries, and build local tax bases."



The funding will produce 3,683 privately owned, privately managed affordable apartments. Seventy-two percent of the apartments (2,650 units) will be designated for families, and 1,033 units will house seniors. At least 295 of the apartments are targeted for persons with disabilities. [A list of housing developments by county is enclosed.] The new awards will bring the number of Housing Credit apartments built in the state to more than 67,000.

In addition to the federal tax credits, five of the apartment developments will receive loans totaling \$4.5 million approved by the N.C. Housing Finance Agency's board of directors.

Thirty-nine of the developments will receive state tax credits authorized by the General Assembly. The loans and state tax credits make it possible to produce affordable apartments in rural counties where incomes are low, and reduce the rents in urban areas.

All of the apartments are affordable for households earning 60 percent of a county's median income, and many are affordable at 50 percent or 40 percent of median as the result of the additional financing. For a family of four, this ranges from \$45,480 (60 percent in Wake County) to \$19,760 (40 percent in low-income counties, such as Robeson or Wilkes). The state's Key Program operating assistance makes apartments affordable for persons with disabilities living on Supplemental Security Income (SSI), which is currently \$721 a month.

The N.C. Housing Finance Agency evaluates the tax credit applications on behalf of the N.C. Federal Tax Reform Allocation Committee. The highly competitive application process uses a quantitative ranking system and includes independent market studies of each property and site visits by agency staff. Each property is rated for architectural design, rent affordability, financial stability, capability of the development team, and criteria to ensure statewide distribution of the financing.

For Sale

Home at 507 West Wade Street in Wadesboro

Photos & Details at www.TheExpressNewspaper.com/507

2 bedrooms
2 baths, 2000 sq ft
Stone home 100% restored to the highest standards.

New: plumbing, electrical, ac/heat systems, insulation, roof, custom windows.

Kitchen features custom cabinetry, granite countertops. Fireplace with gas logs.

Bathrooms feature Italian tiles, frameless glass, Jacuzzi & granite. Hardwood floors.

Custom milled moldings, Large lot with dramatic views from deck.

\$150,000 Includes 1 acre lot next door 704-695-2247 • melmorse@gmail.com