

Bingo at Grace Senior Center
 Bingo games are held every third Tuesday of the month at Grace Senior Center at 1 p.m. All seniors are invited to attend for fun and fellowship. For more information or to register to play call the center at 704-694-6616.

Lilesville Fire Department



All You Can Eat Breakfast

SATURDAY, NOV 7
 6am until 10am

\$6 Per Person

We will be collecting new unwrapped / unopened toys for Toys for Tots. You will receive \$1 off of your meal if you bring a toy!



Proceeds to benefit the Lilesville Fire Department

Free Groceries. Mobile Food Pantry is Next Wednesday

The Mobile Food Pantry and CMC Mobile Health Unit will be at Peachland United Methodist Church, located at 19 Allen Street, on Wednesday, November 4, from 10 a.m. to 12 noon.

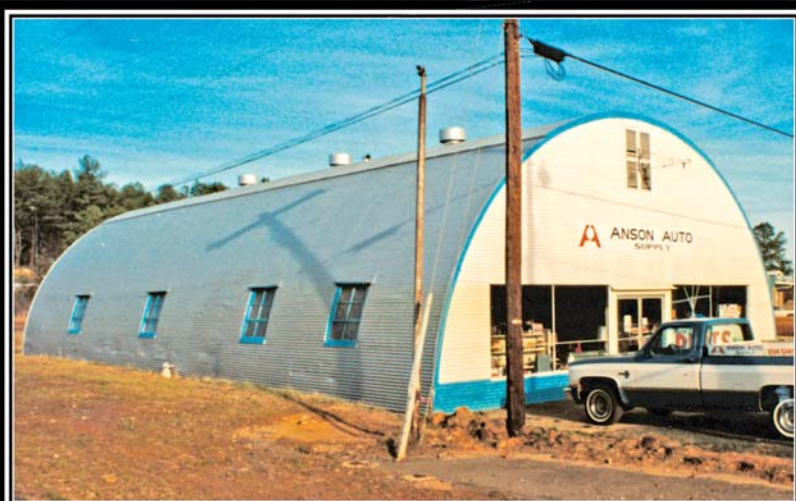
Be sure to bring your own bags, boxes or carts to carry your food. Do not arrive before 9:30 a.m., but before 11:00 a.m. If it is raining the day of or before the delivery, it will be canceled. If you have not yet done so, bring proof of your income to register. You can only pick up food for yourself and one other registered household.

This event is sponsored by Anson Crisis Ministry and local United Methodist, Baptist, and Apostolic Churches.

Interested in volunteering? Call Rev. Angel Christ at Peachland United Methodist Church (704) 272-8124 or Rev. Cindy Lunsford (828) 891-2753.

Enjoy this Remembering column from 2001

Remembering.....
 By Ed McBride



Quonset Hut...what?

Many people do not know what a quonset hut is - "a rounded, no-peak roof building," but during World War II it was a "very welcomed" building facility for not only G.I.'s, but storage as well. After the war many quonset huts were sold for storage - some even for emergency housing also.

Perhaps the first one that I had ever seen close up was the one that the Earleys and Bob Hurst bought and set up as Earley-Hurst Allis-Chalmers - Sales/Service. It was located close to what is presently the driveway of RBC bank.

In years past, as you traveled east on Highway 74, past Bowman's Restaurant, Lineberry's Market and Wadesboro Fertilizer plant, there were no shopping centers - no B. C. Moore & Sons, no Food Lion, no Burger King or any of the business places of today. That was when I lettered the large sign on the front of the 4 Square Brand Fertilizer building. The roof on the quonset hut building was so steep that I had to attach 2x4's to keep "me and my ladder" on the metal roof!

Some time later Anson Auto Supply built a new facility next door and removed the Earley-Hurst building.

Thanks to Yates Tyson for letting me use the above picture - to see, at least, part of what it was many "yesterdays ago!"

"Happy Valentines Day...you all!"

Ed

Christmas Parade Plans Underway

Plans are underway for the 2015 Wadesboro Christmas Parade. Scheduled for 4 p.m. on Thursday, December 3, the uptown parade route will remain the same as in previous years - starting on Morven Road for the line-up and concluding at the Ray Shelton Ball Field for breakdown. The parade will move down Washington, Martin and Greene Streets.

A parade is a community's way of expressing holiday greetings. Entries are being accepted by the Anson County Chamber of Commerce at any time between now and November 25. Floats, both professionally designed and homemade are eligible for entry.

For more information on the parade or to rent a float, contact the Anson County Chamber of Commerce at 704-694-4181 or ansonchamber@windstream.net. Parade entry form and safety rules can be downloaded from www.ansoncounty.org.

Leadership Summit for Middle and High School Students!

An event labeled as a Leadership Summit and called "Get That Work" will be held on Saturday, November 14, from 10 a.m. to 2 p.m. It takes place in the Community Room at Carolinas HealthCare-Anson Hospital in Wadesboro. Participants will learn how to prepare for college and how to be successful in school, in the community and in life. Creeta's Fitness Team will also get participants moving and grooving during the event. Breakfast and lunch will be provided. The event is free.

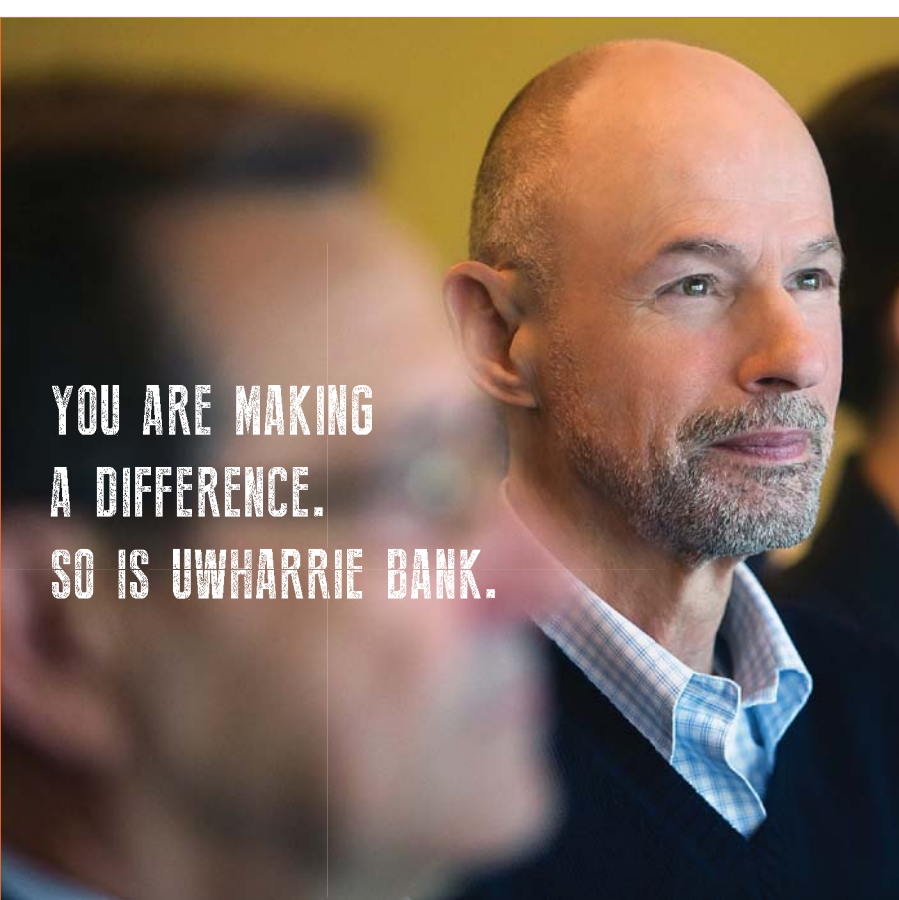
The host is Beyond the Block, Inc., a leadership development program serving youth in Anson and surrounding counties. Call or text Nadia Smith at 336-337-5114 to register your middle or high school student by October 31.

WHIT'S CONVENIENCE STORE NOW HAS ETHANOL-FREE 93 OCTANE GASOLINE IN LILESVILLE & WADESBORO

No more having to drive outside of Anson County to buy ethanol-free gas...Whit's has it right here at home!

WHIT'S LILESVILLE • 101 West Wall Street
 704-848-8263 Mon-Sat 6am-10pm Sun 8am-10pm

WHIT'S #2 WADESBORO • 1787 Morven Road
 704-694-5350 Mon-Sat 6am-10pm Sun 8am-10pm



YOU ARE MAKING A DIFFERENCE. SO IS UWHARRIE BANK.

When you run a local business, you're making a difference in the lives of your customers, your employees and in the local economy. At Uwharrie Bank, we want to make a difference, too. That means providing you with great service, top-notch technology and extraordinary people. We're all working to make a difference, together.


uwharrie.com

800.438.6864

Member FDIC


Uwharrie BANK

making a difference®



Wadesboro Rotary Club

BBQ



AND COW PASTURE BINGO

Tuesday, November 3, 2015 at the National Guard Armory

Cow Pasture Bingo Win \$1,000

FIRST PRIZE **\$500**
 SECOND PRIZE **\$250**
 THIRD PRIZE

Tickets \$10 each
 Winner determined by survey
 Decision of judges is final

PORK BBQ OR ADOBE CHICKEN

SERVING 11 A.M.-6 P.M.
 Plate includes BBQ or chicken, baked beans, slaw, roll and cookie

Tickets \$9 each

Takeouts available
 Bake sale items as priced

