

For the fifth consecutive year Rocky River Springs Fish House plans to provide a free meal to veterans and current military personnel to commemorate Veteran's Day. This meal will be served this Sunday, November 9, from 3 to 8:30 p.m. Meals from the Senior Menu will be provided, along with tea or coffee, free of charge to any US military person. A proof of service, such as military card, hat, cap, medal, picture, etc. is all that is required. The offer is good for dine-in only.



Kermit Efird, founding owner and an army veteran himself, wants to provide this special "Thank You" to all of our veterans for their service. He anticipates more than 200 meals will be given to veterans this year.

Rocky River Springs Fish House is a 46-year-old, family-owned restaurant located in the community of Aquadale. Their address is 33850 Rocky River Springs Road, Norwood NC. From Ansonville, take Plank Road north, and Rocky River Springs Road is on your left just before you get to Highway 138. Look for the big sign. Visit their website, [www.thickfish.com](http://www.thickfish.com) or call 704-474-3052 for more information.

### Musical Tribute for Veterans on Thursday

For the ninth year the Cheraw Arts Commission and On Stage Theatre Group will honor veterans with a musical tribute featuring local singers and musicians. This year's Musical Tribute to Veteran's will be held on Thursday, November 6 at Pee Dee Union Baptist Church, located at 92 Chestnut Street. The public is invited to attend this free performance to be presented at 7:30 p.m.

Musical Director Barbara Dickson and emcee Melanie Trusky have created a program that includes patriotic songs and inspirational dialogue. Community singers will share their musical talents for this annual performance, with Tim Smoak as accompanist for the event.

For additional information please contact the Cheraw Arts Commission at 843-537-8420, ext 12.

### Blood Drive on November 10

On Monday, November 10 there will be a Blood Drive at Peachland-Polkton Elementary School from 2 to 6:30 p.m. PPES and the Community Blood Center of the Carolinas (CBCCC) will host the Blood Drive in the gym. All donors must be at least 16 years old and weight at least 120 pounds.

The CBCCC is the primary blood supplier to Anson County, and all blood donated stays here to save local lives.

If you will donate blood, please make an appointment at [www.cbcc.us](http://www.cbcc.us) or call 704-272-8061. All students who bring a blood donor will receive a free local life saver t-shirt. And, best of all, the homeroom class that has the most participation will receive a pizza party!

### Blood Drive at Anson High School November 12

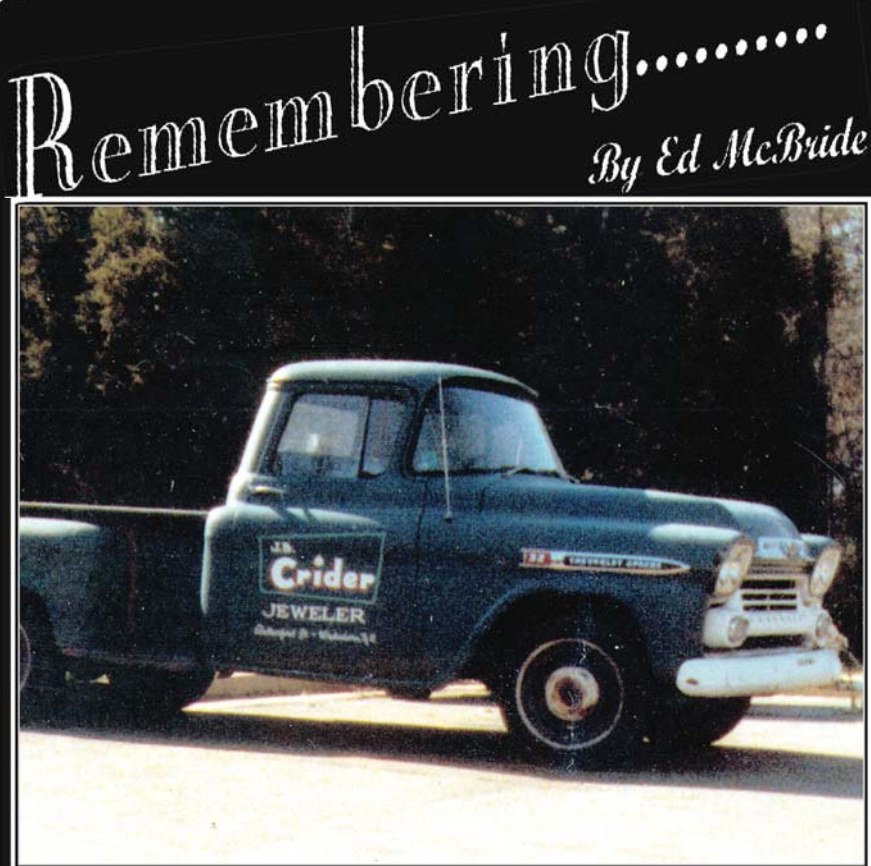
There will be a Blood Drive held at Anson High School on Wednesday, November 12. Anyone weighing 120 pounds or more is urged to come donate blood between the hours of 8:30 a.m. to 1:30 p.m. There's a free t-shirt for all donors.

### Anson Board of Commissioners Meet November 10

The Anson County Board of Commissioners will hold their November meeting on Monday, November 10. The meeting begins at 6 p.m. in Suite 209 of the Government Center, located at the corner of Greene and Wade Streets in uptown Wadesboro.

**52' TPS GOURMET MODULAR HOME**  
**TURN KEY ONLY 1,300 SQUARE FT OFF FRAME MODULAR**  
 6 Panel Doors • 8' Flat Ceilings • Insulated Windows • Heat Pump  
 Finished Drywall Throughout & More! Call for details!

*No land improvements included, but can be added.*  
**1st CHOICE HOME CENTERS**  
 2008 E Roosevelt Street (Hwy 74)  
 Monroe • 704-225-8850  
[www.1stchoicemonroe.com](http://www.1stchoicemonroe.com)



### J. B. Crider, Jeweler

Can you believe that the Chevrolet pickup in the picture above was less than \$2,000 new, and included NO electric door locks, no electric windows, no cruise control, no power steering, no radio or heater! However, before closing the purchase deal and driving off from the dealership, Bun Crider did "add on a heater and radio." (AM only, no FM!)

J. B. "Bun" Crider and Gertrude began their jewelry business back in the late 1940's in the building which was part of the National Hotel. It was in the space formerly used for the hotel barber shop, and later was the office of Dr. Jim Smith's

Chiropractic. After Bun opened his jewelry, clock and watch repair business, things were going well. Then the National Hotel burned on March 31, 1958, totally destroying the hotel, with very severe damage to his part of the building.

Bun then moved across West Wade Street to the former Joe Liles Company building. His later, and final, move was the former Bowman Jewelry building on North Rutherford Street - finishing a lifetime of watch and clock repair - now a lost art!

I lettered the above new 1959 Chevrolet - and it did look sharp!! Both Bun and Gertrude are now deceased.

### 2015 Southern Piedmont Farm School

The demand for locally grown food continues to grow despite a weak economy. Direct sales from farms to consumers grew 215% from 1992-2007. The average farmer in NC is 57 years old, and looking forward to retirement. We need new farmers to meet the demand for locally grown food in North Carolina. Quite often people come to Cooperative Extension and say "I have some land that I want to do something with ... but I don't know what. Can you tell me what I can grow and make some money?"

This is really an open-ended question, because success of an agricultural venture really depends on the operator and the market. Any good business starts out with a good plan and lots of research. More and more families are looking at ways to supplement their incomes and put their land into something productive.

The Southern Piedmont Farm School is a 7 month educational program that trains beginning and transitioning farmers with strong commitment, to operate successful small-scale sustainable farms. The school offers seven business planning seminars, which will give farmers the tools to create a viable business plan. Each business session will focus on different areas of writing a business plan including financial management and effective marketing strategies. The school also includes seven, day-long field trips at different working farms led by innovative experienced farmers and agricultural professionals.

Participants will learn about low-cost sustainable farming methods, from fruits, vegetables, cows, pigs, poultry, goats, specialty crops and agritourism. The business classes will meet the second Thursday of the month beginning in January from 6-9pm at the Rowan County Extension Center, and the farm field days will typically be the 4th Thursday of the month from 9am-3pm. The farm field days will take place at various farms throughout the piedmont. Class size is limited so register early. Registration deadline is November 14th, one person: \$250, two people: \$400.

Visit [www.ces.ncsu.edu](http://www.ces.ncsu.edu) for the brochure and application, or call Anson Cooperative Extension horticulture agent, Aimee Colf, 704-694-2415 for more information. A 2015 Sandhills Farm School is also being planned for Richmond County in Rockingham. The start date is still pending, however, if you would like more information on either school do not hesitate to call our office.

### BCSWCD Monthly Board Meeting

The Brown Creek Soil & Water Conservation District monthly board meeting will be held on Monday, November 25 at 10 a.m. at the BCSWCD office located at 1758 Morven Road in Wadesboro. For more information call 704-694-3516.

# Value BONANZA

## BONANZA BUCKS PLUS

**0% FINANCING FOR 72 MONTHS** OR **CASH BACK**

This year's Value Bonanza gives you MORE SMART WAYS TO SAVE on select New Holland hay and forage equipment. It starts with **BONANZA BUCKS** - it's like bonus cash just for buying - and continues with **0% FINANCING FOR 72 MONTHS**. That's SIX YEARS without finance charges. Or choose **CASH BACK** in lieu of financing on these models:

- Roll-Belt™ Round Balers
- Large Square Balers
- Small Square Balers
- Speedrower® Self-Propelled Windrowers
- Haybine® Mower-Conditioners
- Discbine® Disc Mower-Conditioners
- MegaCutter™ Mounted Triple Mower-Conditioners

**www.BrooksSales.com**  
 Act fast! See us before this offer ends on November 30, 2014.

**3144 Highway 74 East**  
**Monroe 704-233-4242**  
 Mon - Fri 7:30 am - 5:30 pm  
 Saturday 8 - 12 noon

Would you be a dear and hold my kitty while Dr. Kiker examines my eyes?

**Is it time to get your eyes checked?**

Accepting New Patients  
 We Accept Most Insurances  
**704-694-3618**  
 Call for an appointment today  
 Locally Owned & Operated

**ANSON FAMILY OPTOMETRIC, PLLC.**

Holly Allison Kiker, OD

1134 Holly Street in Wadesboro (On Highway 74 across from Forbes Jewelers)  
 Mon-Thurs 8:30-5 & Friday 8:30-12:30 704-694-3618

\*For commercial use. Offer subject to CNH Industrial Capital America LLC credit approval. See your New Holland dealer for details and eligibility requirements. Depending on model, a down payment may be required. Offer good through November 30, 2014, at participating New Holland dealers in the United States. Offer subject to change. Taxes, freight, set-up, delivery, additional options or attachments not included in price. © 2014 CNH Industrial Capital America LLC. All rights reserved. New Holland Agriculture is a trademark registered in the United States and many other countries, owned by or licensed to CNH Industrial N.V., its subsidiaries or affiliates. CNH Industrial Capital is a trademark in the United States and many other countries, owned by or licensed to CNH Industrial N.V., its subsidiaries or affiliates.